

INDUSTRIAL BROKERAGE, ADVISORY & CONSULTING

*South Bay industrial real estate experts
with three decades of experience,
relationships, and results*

MARC BONANDO, SIOR
SVP, Managing Director

BRAD CONNORS
First Vice President

TYLER ANTROBIUS
Associate

NEED ASSISTANCE WITH AN UPCOMING *REAL ESTATE* DECISION?

Marc Bonando, Brad Connors & Tyler Antrobius are part of the Kidder Mathews Industrial Services group and have a combined three decades of industrial experience in the South Bay marketplace.

Widely respected for their integrity, nation-wide relationships in the public, institutional, & private sectors, their team brings the highest level of service and experience to every client. Combined with an unsurpassed local knowledge, monitoring trends and the use of innovative tech driven resources, the Bonando/Connors/Antrobius team provides clients with the strategic and tactical expertise to execute the most successful transactions in the industry.

NOTABLE CLIENTS



OUR SERVICES



Industrial &
Manufacturing
Facilities



Agency Leasing
& Advisory



Lease Renewal
Negotiations



Acquisition &
Disposition Services



Supply Chain
& Logistics

*We seek to quantify
risk, eliminate surprise
& manage expectations
every step of the way.*

SELECT TEAM TRANSACTIONS



126 E ORIS ST, COMPTON, CA

| | |
|------------|---|
| LOT SIZE | 4.3 acres |
| NRSF | 94,875 SF |
| BUYER | Institutional developer |
| TYPE | Class A warehouse / 32' clear |
| PRE-LEASED | 10-year deal completed while under construction |

Featured Transaction



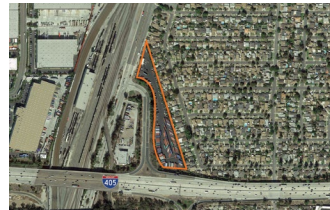
22707 S WILMINGTON AVE

Carson, CA
107,000 SF on 14 AC | Leased



1580 W CARSON ST

Long Beach, CA
43,787 SF | Leased & Sold



21900 S ALAMEDA ST

Carson, CA
4.17 AC | Leased & Sold



14300 S MAIN ST

Gardena, CA
220,000 SF | Sold



4350 CONANT ST

Long Beach, CA
140,430 SF | Leased



1460 BEACHEY PL

Carson, CA
51,825 SF | Leased



3929 E CONANT ST

Long Beach, CA
11,857 SF | Sold



16961 S CENTRAL AVE

Carson, CA
32,639 SF | Leased & Sold



1830 205TH ST

Torrance, CA
31,505 SF | Leased



16901-16905 KEEGAN AVE

Carson, CA
91,387 SF | Leased



1123 SANDHILL AVE

Carson, CA
61,944 SF | Sold



1540 W 190TH ST

Torrance, CA 90501
90,133 SF | Leased

A REPUTATION BUILT ON *RESULTS*

"Kidder Mathews South Bay Industrial team has been tremendous to work with. We have uncovered many opportunities together. Their dedication to superior market intel combined with unparalleled work ethic make them a stand out team."

GREG PEARSON
Fortress Properties

"Marc and Brad sold us a land site that was entitled for development. Through their vigorous marketing effort, they helped us pre-lease the building prior to completing construction. Their market knowledge and professionalism is second to none. We look forward to many more transactions with Brad and his team."

LAUREN SUAZO
Westcore Properties

"Watson Land Company has a great working relationship with Brad, Marc and their entire team. They have represented multiple tenants within our portfolio over the years. We continue to be impressed with their professionalism and dedication to their clients. They are definitely and up and coming team in the South Bay Industrial Real Estate marketplace."

KIRK JOHNSON
EVP, Watson Land Company

"For over a decade I have worked with Marc Bonando and his team. They represent the utmost in ethical standards with a clear focus on their clients goals and objectives. Consistently providing data and timely information. We've had a first class experience with Marc and his team."

MIKE DEL SANTO
SVP, Asset Management
Alere Property Group

“

Marc helped us purchase our building over 15 years ago. The building offers superior functionality in an exceptional location with easy access to all of the major Los Angeles freeways. It has been one of the best investments we have ever made.

LARRY MILLER
CEO, Sit N Sleep

Kidder Mathews is the largest fully independent commercial real estate firm in the Western U.S., with over 900 real estate professionals and staff in 20 offices in Washington, Oregon, California, Idaho, Nevada, and Arizona. We offer a complete range of brokerage, appraisal, asset services, consulting, and debt & equity finance services for all property types.

MARC BONANDO, SIOR
SVP, Managing Director
310.906.3290
marc.bonando@kidder.com
LIC N° 01348269

BRAD CONNORS
First Vice President
310.906.3266
brad.connors@kidder.com
LIC N° 01931267

TYLER ANTROBIUS
Associate
310.906.3285
tyler.antrobis@kidder.com
LIC N° 02251042

KIDDER.COM

This information supplied herein is from sources we deem reliable. It is provided without any representation, warranty, or guarantee, expressed or implied as to its accuracy. All Kidder Mathews designs are the sole property of Kidder Mathews. Branded materials and layouts are not authorized for use by any other firm or person.

