

# FOR LEASE

900 AVILA ST, LOS ANGELES, CA 90012

*A rare opportunity to establish your presence in a high-visibility location with unbeatable access to Downtown LA and major transit hubs*











*Explore this distinctive property  
situated in the heart of Chinatown/  
Central City East*

Prime location with high visibility near  
Cesar Chavez Avenue

Walking distance to Chinatown, Olvera Street,  
Union Station, and minutes from Downtown LA

Close access to the Metro A Line  
(Chinatown Station) and major freeways

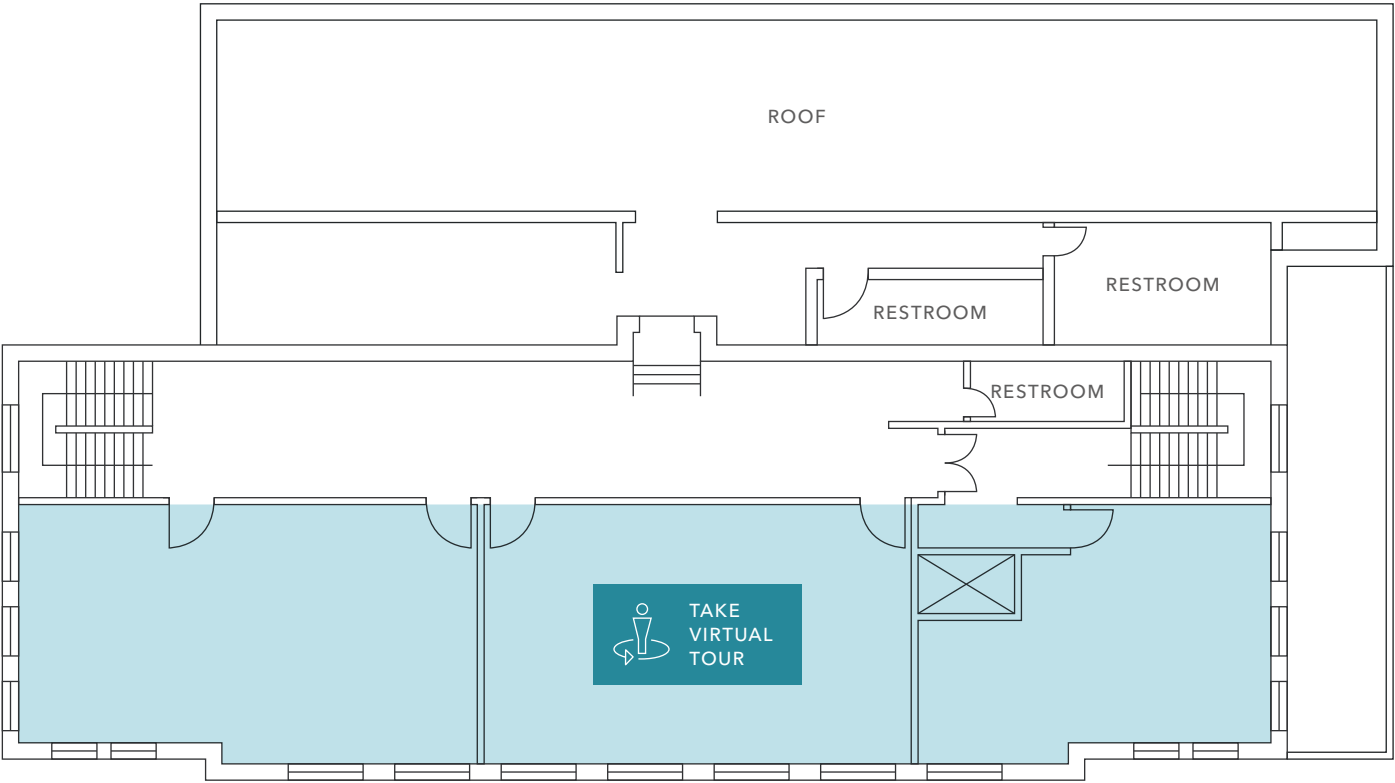
Surrounded by restaurants, local markets,  
and cultural landmarks

Excellent vehicular access, loading areas,  
and signage opportunities with 24-hour access

**3,000**  
AVAILABLE SF

**\$6,500 MG**  
LEASE RATE (PER MONTH)

# 3RD FLOOR PLAN



3,000 SF

AVAILABLE

\$6,500 MG

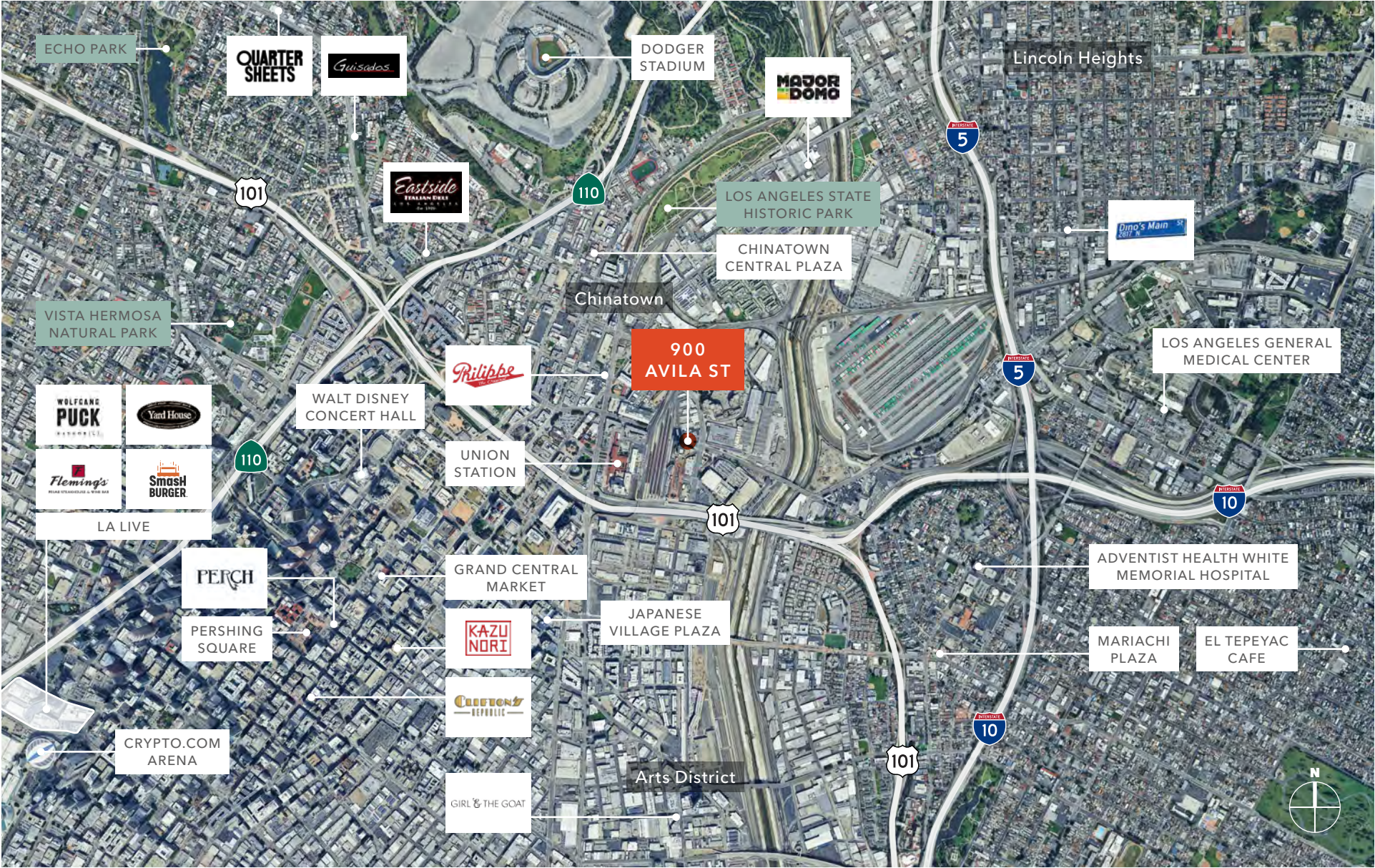
LEASE RATE (PER MONTH)

NOW

AVAILABLE









900  
AVILA ST

*Exclusively leased by*

CHRISTOPHER STECK, CCIM  
213.225.7231  
christopher.steck@kidder.com  
LIC N° 01841338

HEATHER ISENBERG  
213.225.7224  
heather.isenberg@kidder.com  
LIC N° 02092099

JOHN ANTHONY, SIOR  
213.225.7218  
john.anthony@kidder.com  
LIC N° 01226464

KIDDER.COM

This information supplied herein is from sources we deem reliable. It is provided without any representation, warranty, or guarantee, expressed or implied as to its accuracy. Prospective Buyer or Tenant should conduct an independent investigation and verification of all matters deemed to be material, including, but not limited to, statements of income and expenses. Consult your attorney, accountant, or other professional advisor. All Kidder Mathews designs are the sole property of Kidder Mathews. Branded materials and layouts are not authorized for use by any other firm or person.

