

NEW OFFICE SPACE SUBLEASE @ 777 S FIGUEROA ST

7,881 SF Former Spec Suite Office Space
in Downtown Los Angeles - Suite 4600

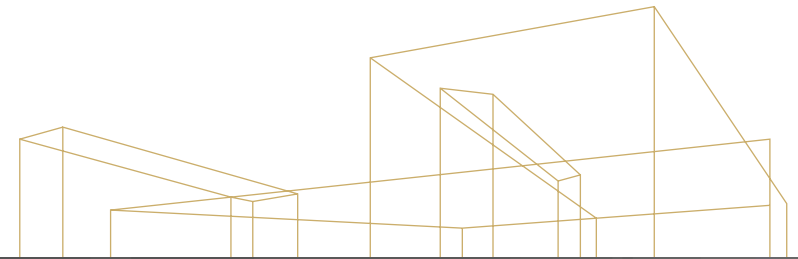


777 S FIGUEROA ST, STE 4600, LOS ANGELES, CA 90017



**Kidder
Mathews**

777 S FIGUEROA ST SUITE 4600



7,881 SF

TOTAL SF

\$2.50/SF

ASKING RENT PER SF FSG

7/31/2024

TERM

TROPHY

CLASS

96

WALK SCORE

100

TRANSIT SCORE

Property Highlights

FULL SUITE 7,881 RSF on 46th Floor

OCCUPANCY Immediate

TERM through 7/31/2024

FURNITURE included, plug & play

ON-SITE parking available

LARGE windows with great views and lots of natural light

DOUBLE-DOOR entry with direct elevator exposure

BEAUTIFUL built-in reception

CONTIGUOUS expansion space available on a direct basis

For more
information
contact

JOHN ANTHONY, SIOR
213.225.7218
john.anthony@kidder.com
LIC N° 01226464

CHRISTOPHER STECK
213.225.7231
christopher.steck@kidder.com
LIC N° 01841338

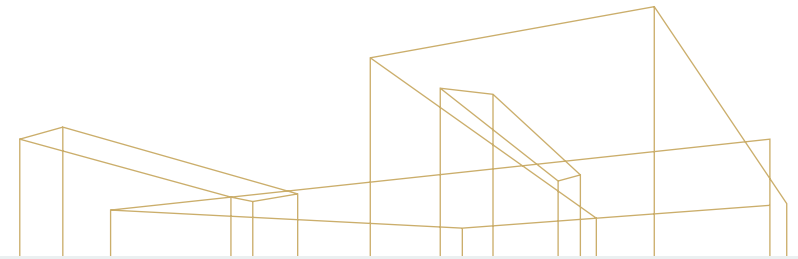
CHRISTOPHER GIORDANO
213.225.7219
christopher.giordano@kidder.com
LIC N° 01928706

[KIDDER.COM](https://www.kidder.com)



This information supplied herein is from sources we deem reliable. It is provided without any representation, warranty, or guarantee, expressed or implied as to its accuracy. Prospective Buyer or Tenant should conduct an independent investigation and verification of all matters deemed to be material, including, but not limited to, statements of income and expenses. Consult your attorney, accountant, or other professional advisor.

777 S FIGUEROA ST SUITE 4600



FLOOR PLAN

7,881 SF

SQUARE FEET AVAILABLE

\$2.50/SF

ASKING RENT PER SF FSG

7/31/2024

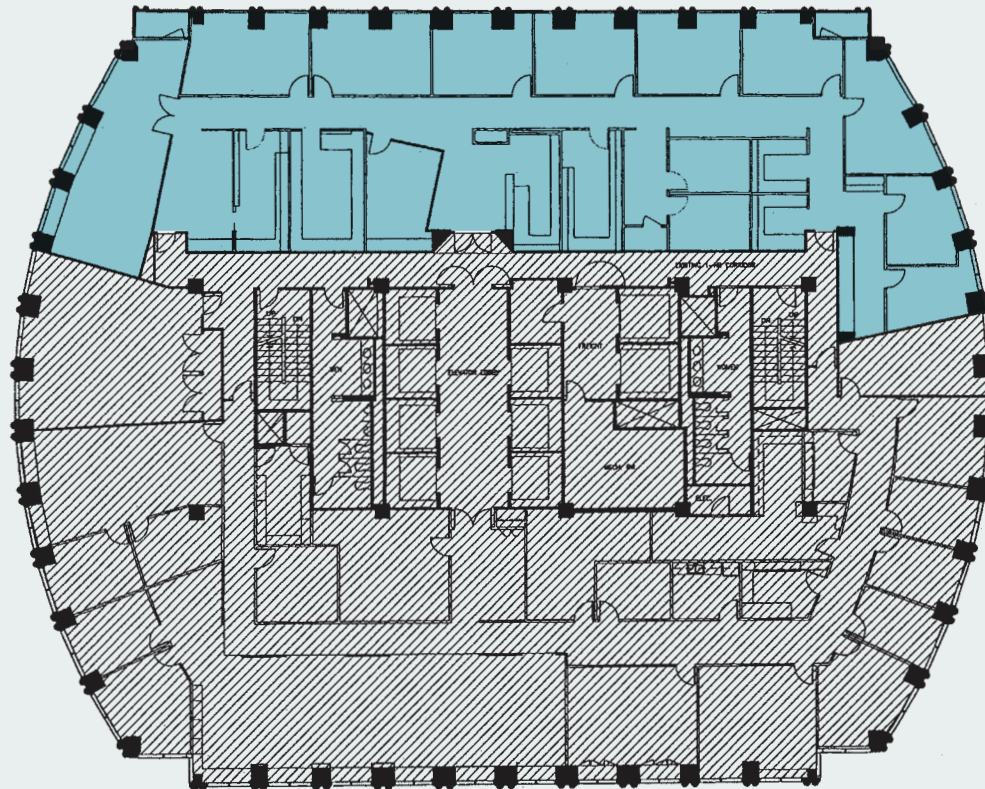
TERM

96

WALK SCORE

100

TRANSIT SCORE



UNIT OVERVIEW

12 perimeter offices available with glass panels

2 conference rooms fully wired for video conferencing

2 interior offices adjacent to IT room

10 spacious, socially-distanced cubicles with glass dividers

IT ROOM with supplemental AC

BUILT-IN reception and a waiting area

LARGE eat-in kitchen and additional pantry nook

COPY and work room

For more
information
contact

JOHN ANTHONY, SIOR
213.225.7218
john.anthony@kidder.com

LIC N° 01226464

CHRISTOPHER STECK
213.225.7231
christopher.steck@kidder.com

LIC N° 01841338

CHRISTOPHER GIORDANO
213.225.7219
christopher.giordano@kidder.com

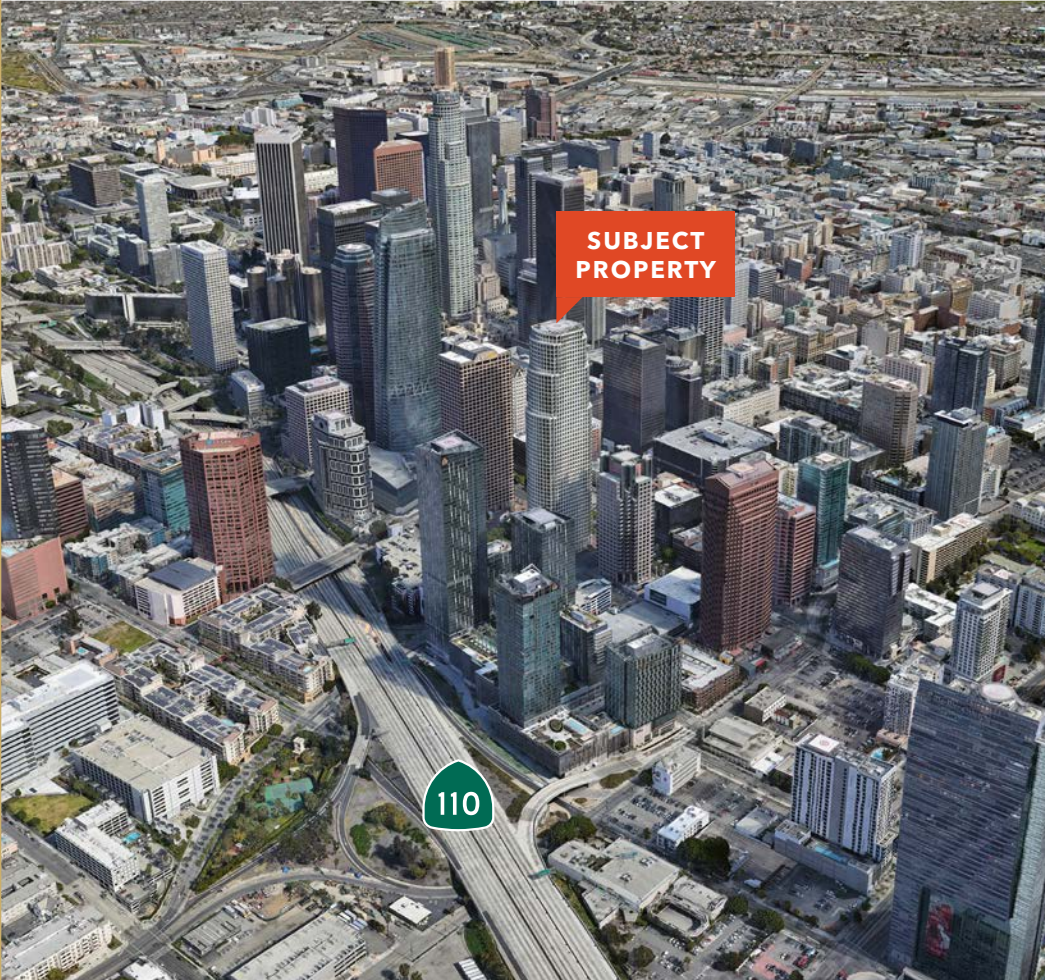
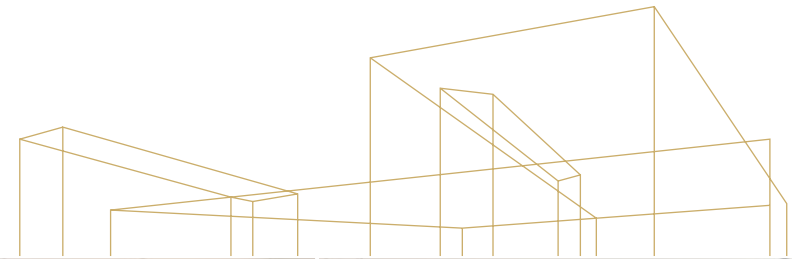
LIC N° 01928706

[KIDDER.COM](https://www.kidder.com)



This information supplied herein is from sources we deem reliable. It is provided without any representation, warranty, or guarantee, expressed or implied as to its accuracy. Prospective Buyer or Tenant should conduct an independent investigation and verification of all matters deemed to be material, including, but not limited to, statements of income and expenses. Consult your attorney, accountant, or other professional advisor.

777 S FIGUEROA ST SUITE 4600



**SUBJECT
PROPERTY**

110



For more
information
contact

JOHN ANTHONY, SIOR
213.225.7218
john.anthony@kidder.com
LIC N° 01226464

CHRISTOPHER STECK
213.225.7231
christopher.steck@kidder.com
LIC N° 01841338

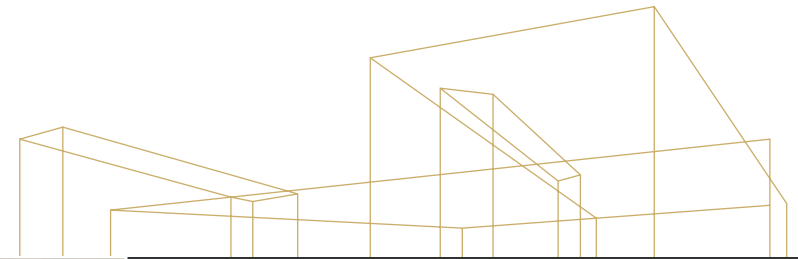
CHRISTOPHER GIORDANO
213.225.7219
christopher.giordano@kidder.com
LIC N° 01928706

KIDDER.COM

This information supplied herein is from sources we deem reliable. It is provided without any representation, warranty, or guarantee, expressed or implied as to its accuracy. Prospective Buyer or Tenant should conduct an independent investigation and verification of all matters deemed to be material, including, but not limited to, statements of income and expenses. Consult your attorney, accountant, or other professional advisor.



777 S FIGUEROA ST SUITE 4600



Property Features



BUILDING DESIGNED BY CESAR PELLI



**LOCATED IN DTLA'S FINANCIAL DISTRICT
WITH PROXIMITY TO SOUTH PARK**



5 MINUTE WALK TO THE METRO STATION



IMMEDIATE ACCESS TO ALL FREEWAYS



**SURROUNDED BY AMENITIES AND 2.5-ACRE
LANDSCAPED PLAZA WITH SEATING**



**ABOVE FIGAT7TH MALL
INCLUDES TARGET**

**For more
information
contact**

JOHN ANTHONY, SIOB
213.225.7218
john.anthony@kidder.com
LIC N° 01226464

CHRISTOPHER STECK
213.225.7231
christopher.steck@kidder.com
LIC N° 01841338

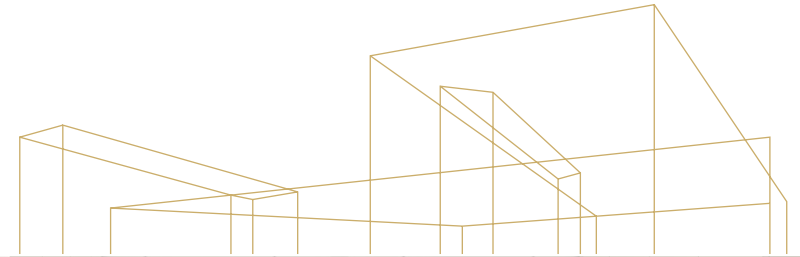
CHRISTOPHER GIORDANO
213.225.7219
christopher.giordano@kidder.com
LIC N° 01928706

KIDDER.COM



This information supplied herein is from sources we deem reliable. It is provided without any representation, warranty, or guarantee, expressed or implied as to its accuracy. Prospective Buyer or Tenant should conduct an independent investigation and verification of all matters deemed to be material, including, but not limited to, statements of income and expenses. Consult your attorney, accountant, or other professional advisor.

777 S FIGUEROA ST SUITE 4600



For more
information
contact

JOHN ANTHONY, SIOR
213.225.7218
john.anthony@kidder.com
LIC N° 01226464

CHRISTOPHER STECK
213.225.7231
christopher.steck@kidder.com
LIC N° 01841338

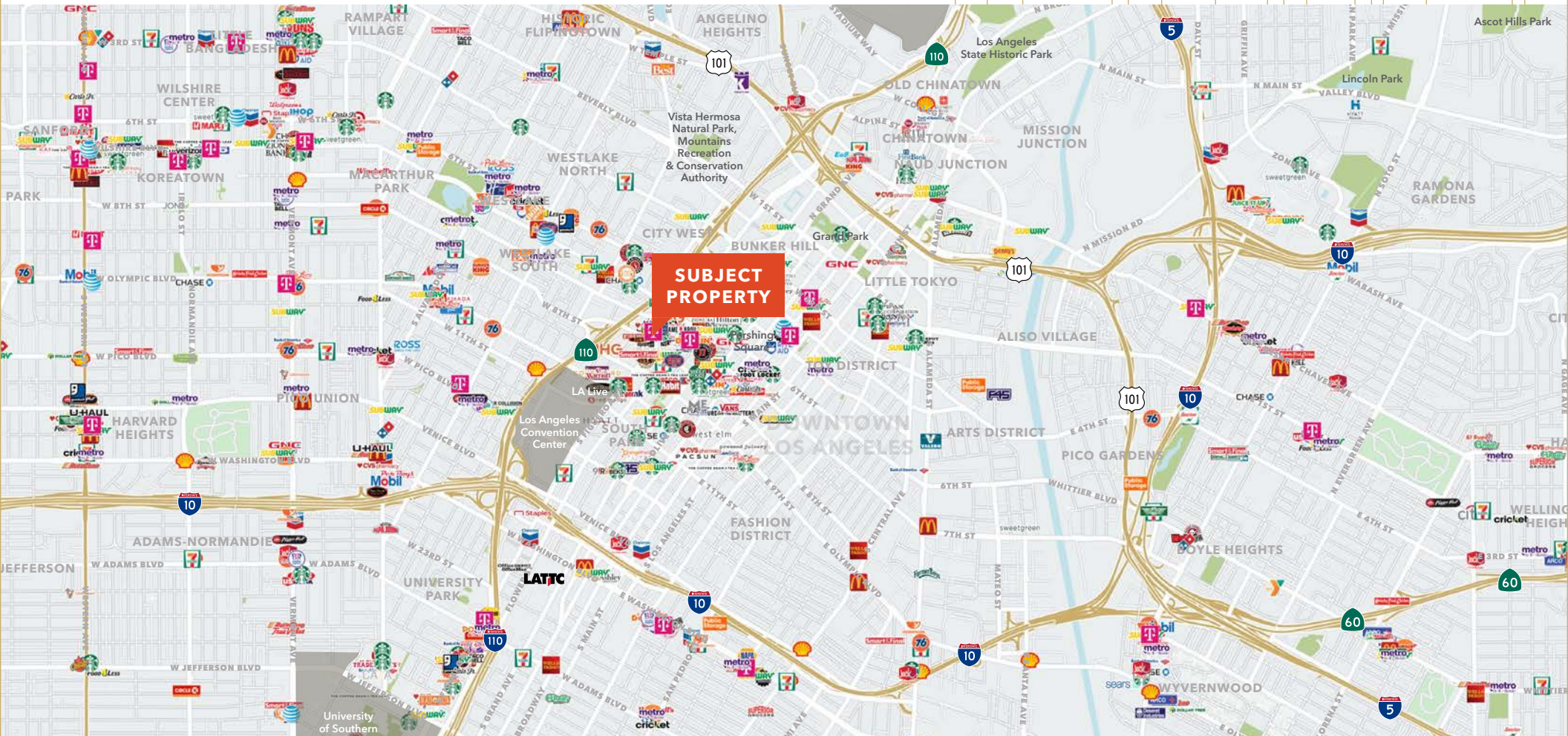
CHRISTOPHER GIORDANO
213.225.7219
christopher.giordano@kidder.com
LIC N° 01928706

KIDDER.COM

This information supplied herein is from sources we deem reliable. It is provided without any representation, warranty, or guarantee, expressed or implied as to its accuracy. Prospective Buyer or Tenant should conduct an independent investigation and verification of all matters deemed to be material, including, but not limited to, statements of income and expenses. Consult your attorney, accountant, or other professional advisor.



777 S FIGUEROA ST SUITE 4600



For more
information
contact

JOHN ANTHONY, SIOB
213.225.7218
john.anthony@kidder.com
LIC N° 01226464

CHRISTOPHER STECK
213.225.7231
christopher.steck@kidder.com
LIC N° 01841338

CHRISTOPHER GIORDANO
213.225.7219
christopher.giordano@kidder.com
LIC N° 01928706

KIDDER.COM

This information supplied herein is from sources we deem reliable. It is provided without any representation, warranty, or guarantee, expressed or implied as to its accuracy. Prospective Buyer or Tenant should conduct an independent investigation and verification of all matters deemed to be material, including, but not limited to, statements of income and expenses. Consult your attorney, accountant, or other professional advisor.

