



FOR LEASE

DTLA's Premier Event Space

617 S OLIVE ST, LOS ANGELES, CA 90014

Rooftop Event Space at the Oviatt Building

Available immediately

Centrally-located in the heart of DTLA

Adjacent to additional parking and Metro Station at Pershing Square

Close proximity to many new restaurants, hotels, and retail

Stunning downtown views



JOHN ANTHONY, SIOR

213.225.7218

john.anthony@kidder.com

LIC N° 01226464

CHRISTOPHER STECK

213.225.7231

christopher.steck@kidder.com

LIC N° 01841338

CHRISTOPHER GIORDANO

213.225.7219

christopher.giordano@kidder.com

LIC N° 01928706

Kidder Mathews

KIDDER.COM

This information supplied herein is from sources we deem reliable. It is provided without any representation, warranty, or guarantee, expressed or implied as to its accuracy. Prospective Buyer or Tenant should conduct an independent investigation and verification of all matters deemed to be material, including, but not limited to, statements of income and expenses. Consult your attorney, accountant, or other professional advisor.



FOR LEASE

DTLA's Premier Event Space

617 S OLIVE ST, LOS ANGELES, CA 90014



Highlights

AVAILABLE 3,203 rentable SF. Total Gross is 8,483 SF (includes penthouse & 12 ft kitchen area)

RENTAL RATE negotiable

HISTORIC highrise

CLASSIC Art Deco Decor

CAPACITY for up to 122 guests

INDOOR/OUTDOOR space with reception area, lounge areas, kitchen, bar and prep area

IDEAL for weddings, bar mitzvahs, corporate events, filming revenue and more

JOHN ANTHONY, SIOR

213.225.7218

john.anthony@kidd.com

LIC N° 01226464

CHRISTOPHER STECK

213.225.7231

christopher.steck@kidd.com

LIC N° 01841338

CHRISTOPHER GIORDANO

213.225.7219

christopher.giordano@kidd.com

LIC N° 01928706

KIDDER.COM

This information supplied herein is from sources we deem reliable. It is provided without any representation, warranty, or guarantee, expressed or implied as to its accuracy. Prospective Buyer or Tenant should conduct an independent investigation and verification of all matters deemed to be material, including, but not limited to, statements of income and expenses. Consult your attorney, accountant, or other professional advisor.



FOR LEASE

DTLA's Premier Event Space

617 S OLIVE ST, LOS ANGELES, CA 90014

Outdoor Event Area



Indoor Event Area



Indoor Event Area



Outdoor Event Area



Outdoor Event Area



JOHN ANTHONY, SIOR

213.225.7218

john.anthony@kidder.com

LIC N° 01226464

CHRISTOPHER STECK

213.225.7231

christopher.steck@kidder.com

LIC N° 01841338

CHRISTOPHER GIORDANO

213.225.7219

christopher.giordano@kidder.com

LIC N° 01928706

KIDDER.COM

This information supplied herein is from sources we deem reliable. It is provided without any representation, warranty, or guarantee, expressed or implied as to its accuracy. Prospective Buyer or Tenant should conduct an independent investigation and verification of all matters deemed to be material, including, but not limited to, statements of income and expenses. Consult your attorney, accountant, or other professional advisor.

km Kidder Mathews

FOR LEASE

DTLA's Premier Event Space

617 S OLIVE ST, LOS ANGELES, CA 90014

Building Lobby



Full Bathroom



Outdoor Event Area



Bride Room & Changing Quarters



JOHN ANTHONY, SIOR

213.225.7218

john.anthony@kidder.com

LIC N° 01226464

CHRISTOPHER STECK

213.225.7231

christopher.steck@kidder.com

LIC N° 01841338

CHRISTOPHER GIORDANO

213.225.7219

christopher.giordano@kidder.com

LIC N° 01928706

KIDDER.COM

This information supplied herein is from sources we deem reliable. It is provided without any representation, warranty, or guarantee, expressed or implied as to its accuracy. Prospective Buyer or Tenant should conduct an independent investigation and verification of all matters deemed to be material, including, but not limited to, statements of income and expenses. Consult your attorney, accountant, or other professional advisor.

km Kidder Mathews

FOR LEASE

DTLA's Premier Event Space

617 S OLIVE ST, LOS ANGELES, CA 90014

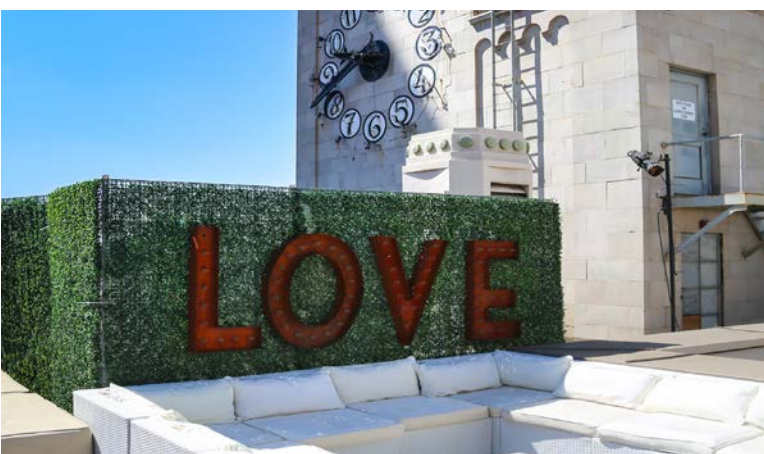
Outdoor Event Area



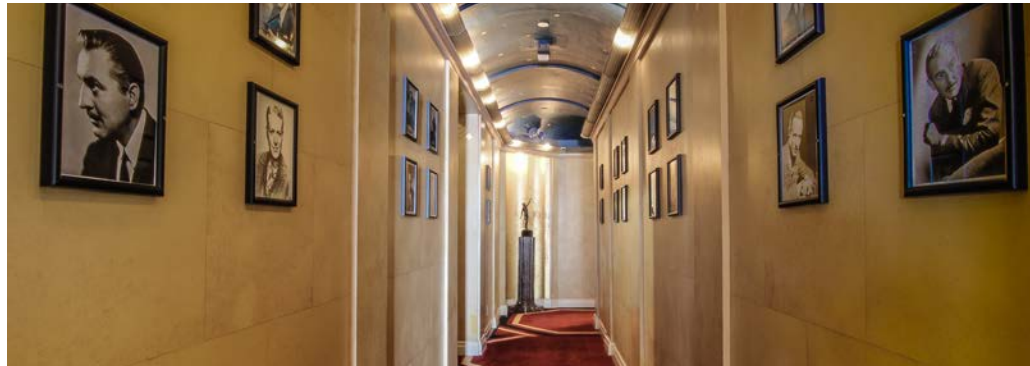
View from Rooftop



Outdoor Event Area



Indoor Event Area



JOHN ANTHONY, SIOR

213.225.7218

john.anthony@kidder.com

LIC N° 01226464

CHRISTOPHER STECK

213.225.7231

christopher.steck@kidder.com

LIC N° 01841338

CHRISTOPHER GIORDANO

213.225.7219

christopher.giordano@kidder.com

LIC N° 01928706

KIDDER.COM

This information supplied herein is from sources we deem reliable. It is provided without any representation, warranty, or guarantee, expressed or implied as to its accuracy. Prospective Buyer or Tenant should conduct an independent investigation and verification of all matters deemed to be material, including, but not limited to, statements of income and expenses. Consult your attorney, accountant, or other professional advisor.

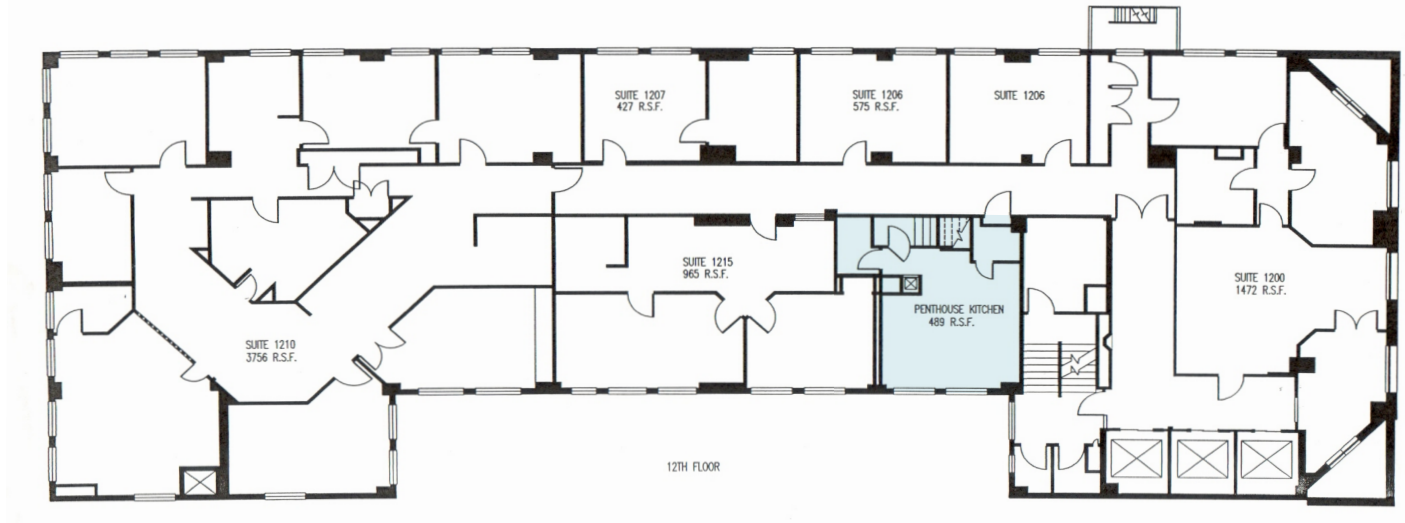
km Kidder Mathews

FOR LEASE

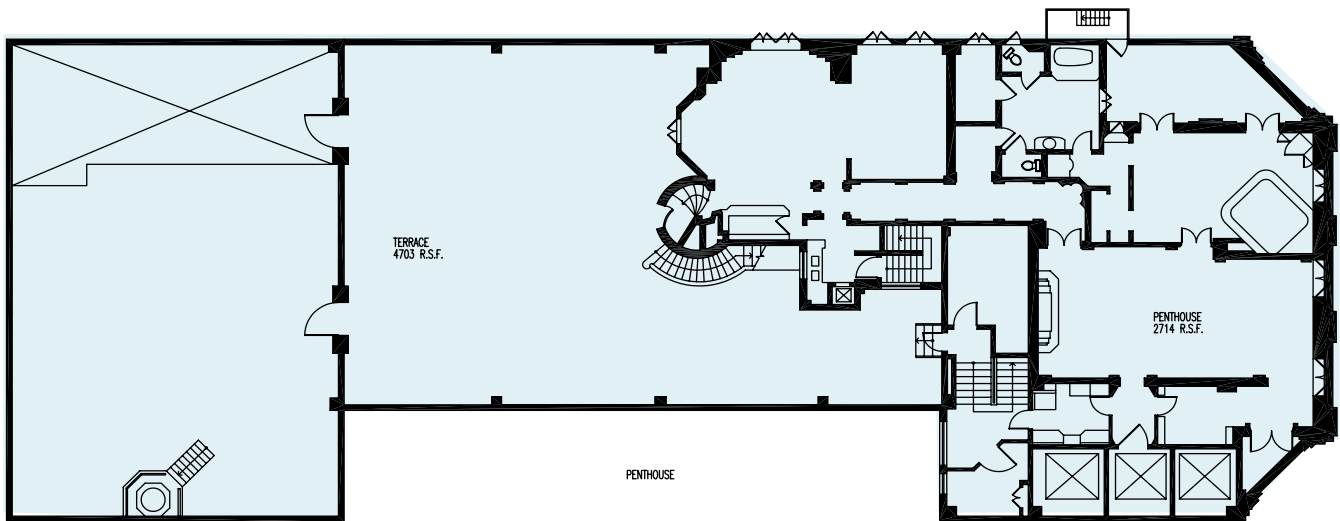
DTLA's Premier Event Space

617 S OLIVE ST, LOS ANGELES, CA 90014

12th Floor Plan - Penthouse Kitchen



Penthouse Floor Plan



JOHN ANTHONY, SIOR

213.225.7218

john.anthony@kiddier.com

LIC N° 01226464

CHRISTOPHER STECK

213.225.7231

christopher.steck@kiddier.com

LIC N° 01841338

CHRISTOPHER GIORDANO

213.225.7219

christopher.giordano@kiddier.com

LIC N° 01928706

KIDDER.COM

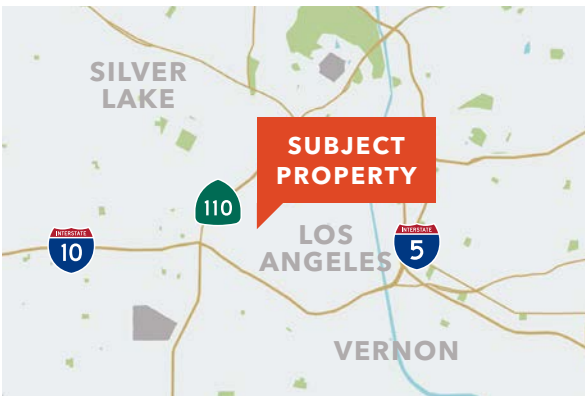
This information supplied herein is from sources we deem reliable. It is provided without any representation, warranty, or guarantee, expressed or implied as to its accuracy. Prospective Buyer or Tenant should conduct an independent investigation and verification of all matters deemed to be material, including, but not limited to, statements of income and expenses. Consult your attorney, accountant, or other professional advisor.



FOR LEASE

DTLA's Premier Event Space

617 S OLIVE ST, LOS ANGELES, CA 90014



THE RENEWAL OF PERSHING SQUARE

Due to the revitalization of several of its neighborhoods, Downtown Los Angeles thrives with a vibrancy never seen in its history. Areas like the Old Bank District and the Historic Core were once filled with vacant buildings; now they're teeming with brand-new apartment buildings, high-end retail shops and restaurants. As a result, businesses are relocating downtown. Population has increased 150% since 2000, and continues to grow at a rapid pace. New downtown destinations like the BLOC, Grand Central Market and FIGat7th draw tourists and locals alike, both day and night.

Pershing Square Park is the heart of Downtown LA. It's also one of the few remaining areas to not receive a facelift. That's about to change. Earlier this year, an international design-team led by the Paris-based Agence Ter were selected to redesign the five-acre park using what they call a "radical flatness" to open up the space, connecting one part of the city to another, offering visitors both entertainment with concert events and relaxation with its great lawn and reflecting pool. Think of it as Central Park on the West Coast.

Other popular venues nearby include Staples Center, Dodger Stadium, Expo Park/USC, The Music Center, and Microsoft Theater.

1-MILE DEMOGRAPHICS



**ESTIMATED
POPULATION**
67,396



**AVERAGE
HH INCOME**
\$35,025



**DAYTIME
EMPLOYMENT**
190,200

JOHN ANTHONY, SIOR

213.225.7218

john.anthony@kiddier.com

LIC N° 01226464

CHRISTOPHER STECK

213.225.7231

christopher.steck@kiddier.com

LIC N° 01841338

CHRISTOPHER GIORDANO

213.225.7219

christopher.giordano@kiddier.com

LIC N° 01928706

KIDDER.COM

This information supplied herein is from sources we deem reliable. It is provided without any representation, warranty, or guarantee, expressed or implied as to its accuracy. Prospective Buyer or Tenant should conduct an independent investigation and verification of all matters deemed to be material, including, but not limited to, statements of income and expenses. Consult your attorney, accountant, or other professional advisor.

