

FOR LEASE

# 350 S BIXEL ST

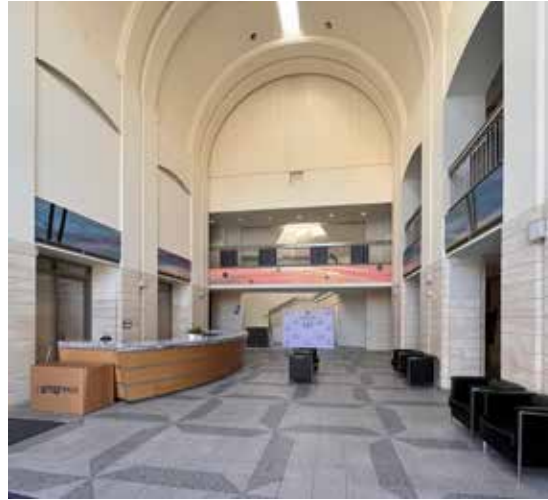
*LA Chamber of Commerce Building  
Office Suites For Lease*

LOS ANGELES, CA



KIDDER.COM

**km** Kidder  
Mathews



*Built out office space that is ready for immediate occupancy.*

---

Prestigious LA Chamber of Commerce location

---

Creative space opportunity

---

On-site secured parking is available

---

Outdoor patio and event space

---

Numerous restaurants and attractions nearby

---

Office spaces immediately available

---

Mixture of open plan and private offices/rooms

---

On-site subterranean parking with direct elevator access

---

---

*\$2.25 FSG*  
ASKING RATE

---

*1:1,000*  
PARKING RATIO

350 S BIXEL ST



### SUITE AVAILABILITY

Suite #	SF	Monthly Asking Rent	Date Available
160	2,311 SF	\$2.25 FSG	Now
201	4,532 SF	\$2.25 FSG	Now
290	15,297 SF (demisable)	\$2.25 FSG	Now

# HIGHLY- ACCESSIBLE LOCATION

Brand new renovation and  
interior improvements

Dramatic 3-story atrium lobby

Secured and controlled access

Direct access elevators to all parking and  
office levels

48 secured/subterranean parking spaces

Private and extensive conference  
room facilities



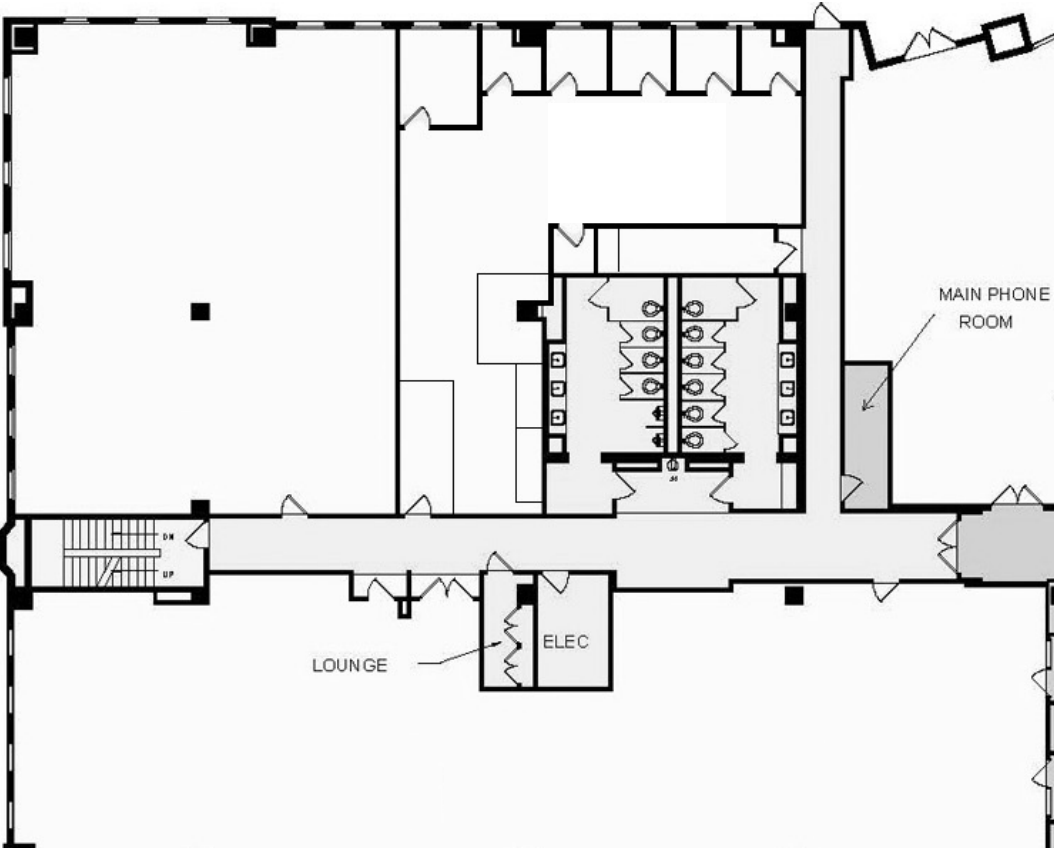


AVAILABLE FOR LEASE

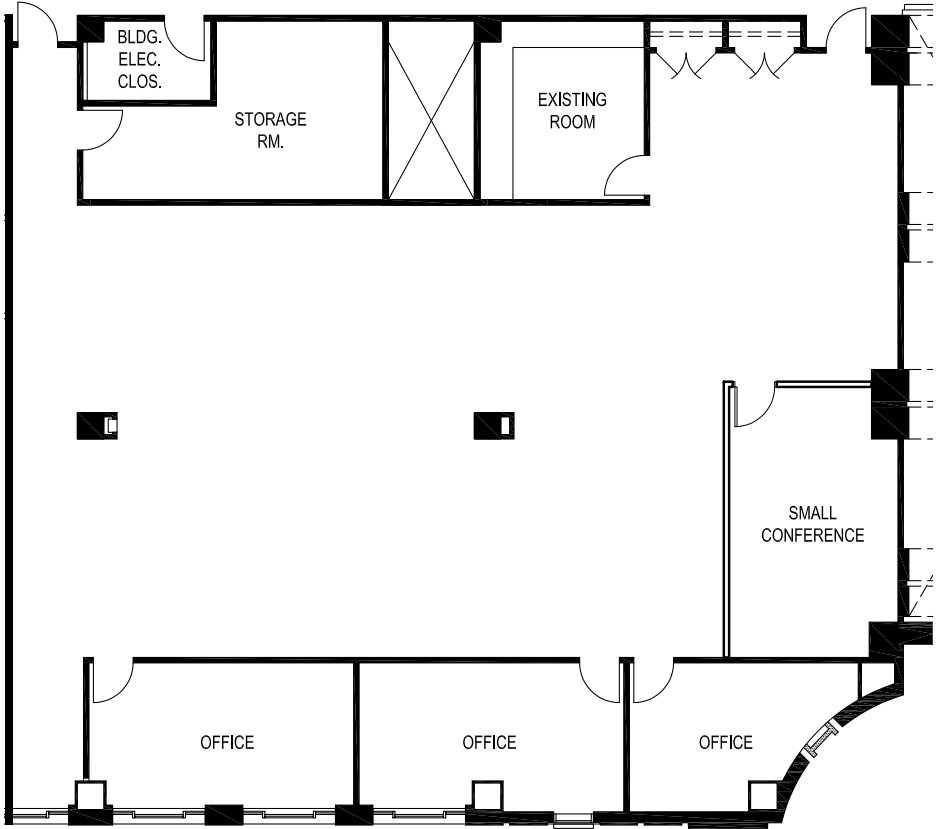


KIDDER MATHEWS

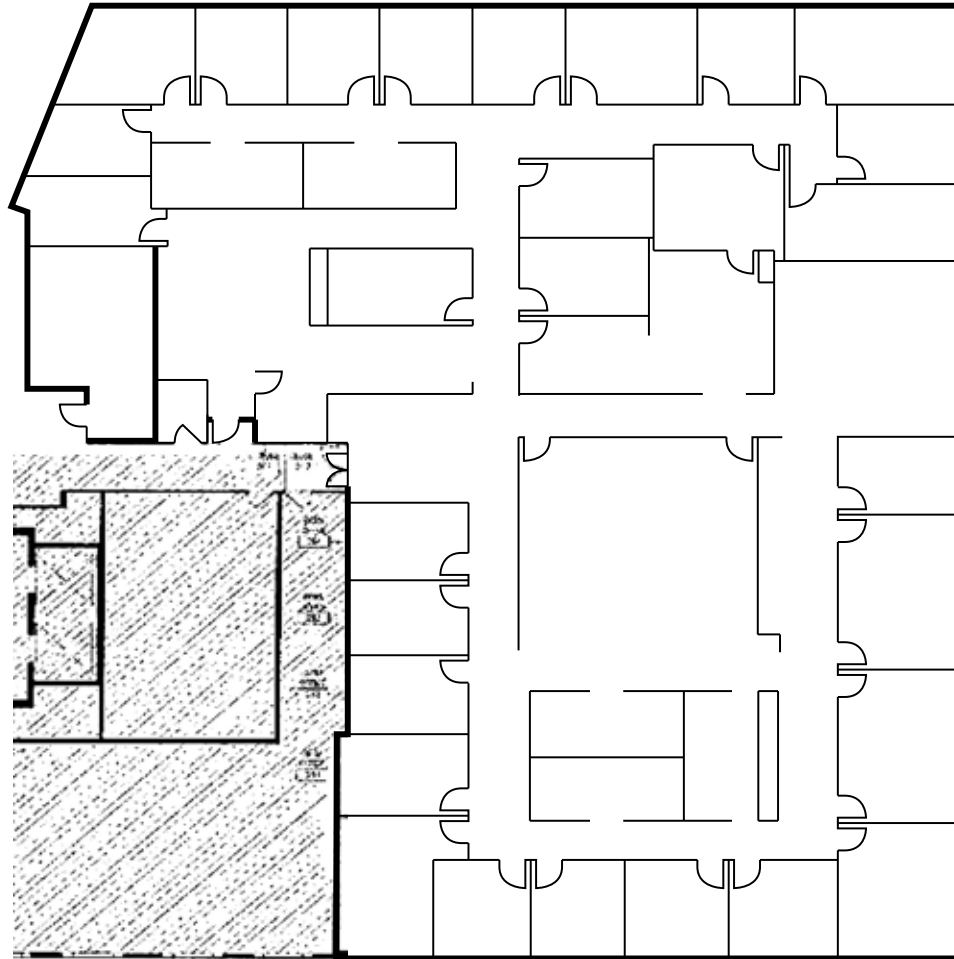
# SUITE 160



# SUITE 201



# SUITE 290



4TH ST

BIXEL ST



350 S BIXEL ST

*Exclusively listed by*

**JOHN ANTHONY, SIOR**

Executive Vice President

Managing Director

213.225.7218

john.anthony@kidder.com

LIC N° 01226464

**HEATHER ISENBERG**

Associate

213.225.7224

heather.isenberg@kidder.com

LIC N° 02092099

**KIDDER.COM**

This information supplied herein is from sources we deem reliable. It is provided without any representation, warranty, or guarantee, expressed or implied as to its accuracy. Prospective Buyer or Tenant should conduct an independent investigation and verification of all matters deemed to be material, including, but not limited to, statements of income and expenses. Consult your attorney, accountant, or other professional advisor.

