

FLEXIBLE OFFICE FOR SUBLEASE

3250 WILSHIRE BLVD, SUITE 400

Flexible use office space for sublease in the heart of Koreatown in the One Park Plaza building located on Wilshire Blvd.

36,732 RSF of contiguous space on the 4th floor

6/30/2026 expiration date

Flexible uses of office, medical, adult education, etc.

Fully built-out turnkey space

110 dedicated covered and secured parking spaces (3/1000)

Exterior signage included

Dedicated entrance from New Hampshire Avenue

SUITE AVAILABILITY

Suite #	Total SF	Asking Rent	Date Available
SUITE 400	36,732 RSF	\$1.75 psf, FSG	Now

JOHN ANTHONY, SIOR

213.225.7218 | john.anthony@kidder.com | LIC N° 01226464

CHRISTOPHER STECK, CCIM

213.225.7231 | christopher.steck@kidder.com | LIC N° 01841338

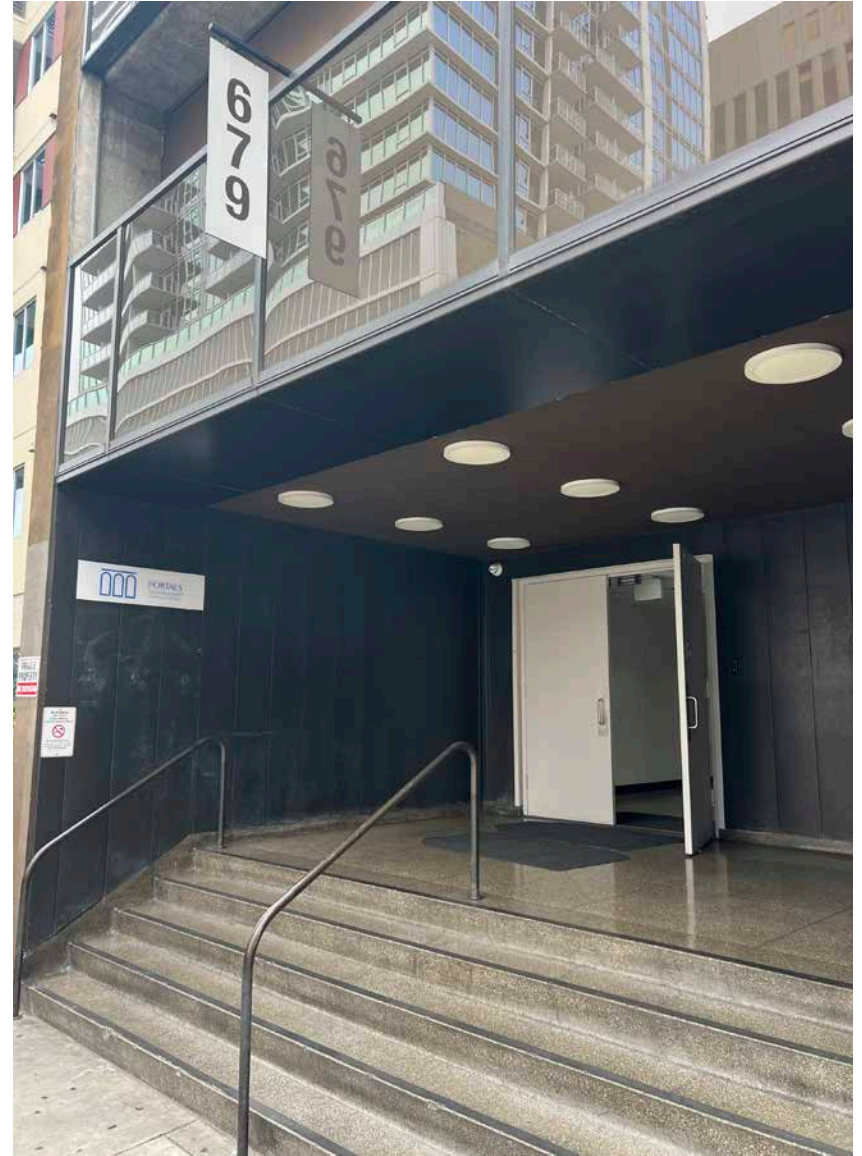
JEFF BOUCHER, SIOR

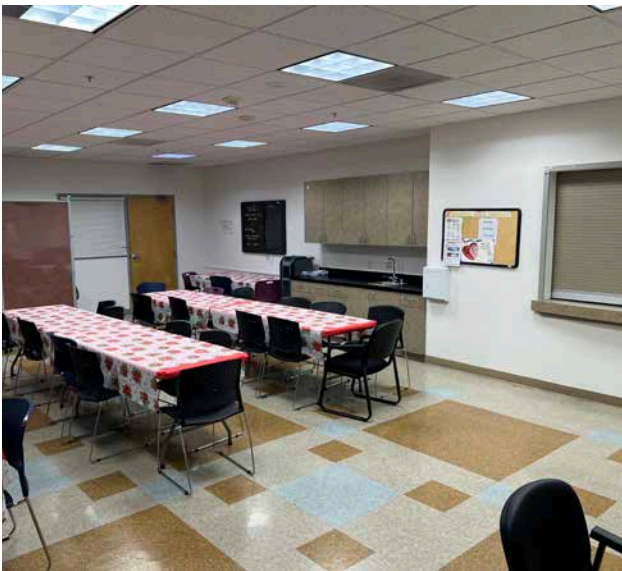
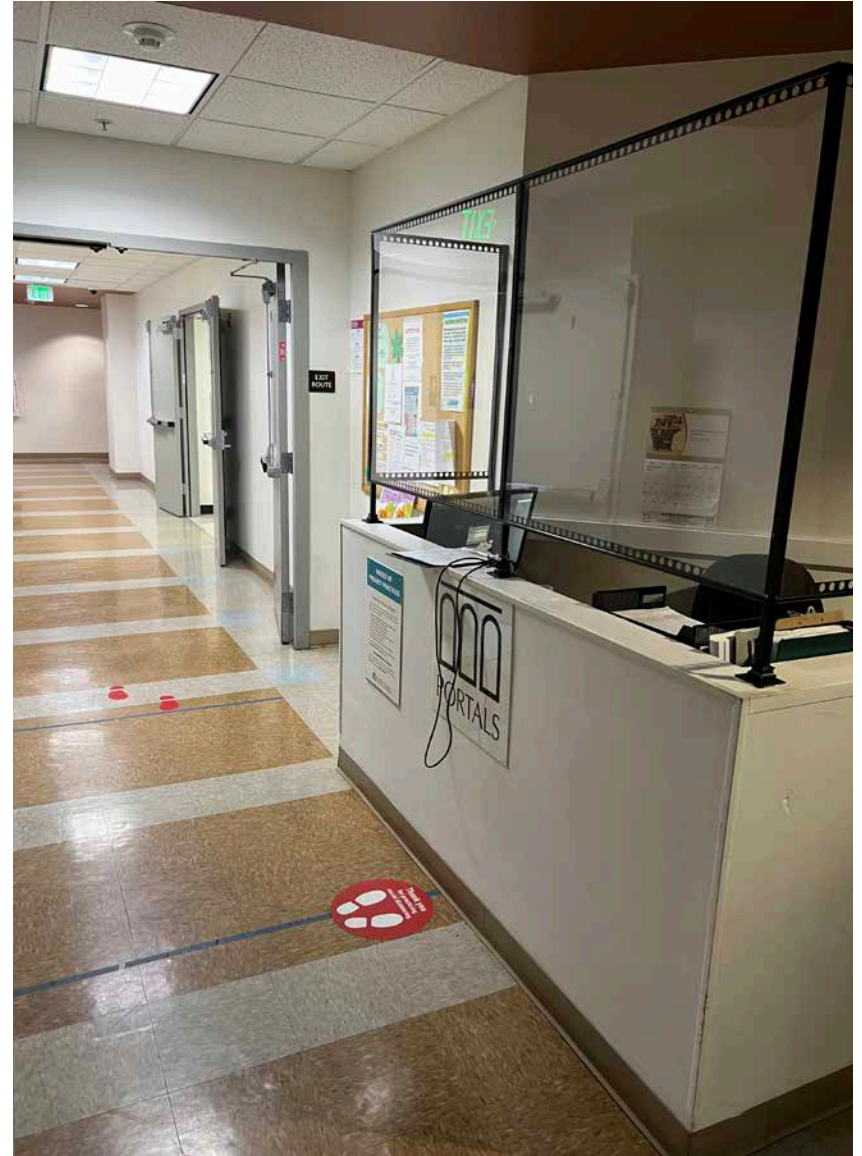
Radius Agent Realty | 916.813.9424 | LIC N° 01052764

KIDDER.COM

This information supplied herein is from sources we deem reliable. It is provided without any representation, warranty, or guarantee, expressed or implied as to its accuracy. Prospective Buyer or Tenant should conduct an independent investigation and verification of all matters deemed to be material, including, but not limited to, statements of income and expenses. Consult your attorney, accountant, or other professional advisor.







NEW HAMPSHIRE AVE

WILSHIRE BLVD



7TH ST

ALLEY

3250 WILSHIRE BLVD



101

VONS

SHATTO PARK RECREATION CENTER



WILSHIRE CENTER

Staples

VERMONT AVE

WILSHIRE BLVD

LAFAYETTE PARK & RECREATION CENTER

WESTLAKE

KOREATOWN

SUBJECT PROPERTY

MACARTHUR PARK

110

LAJIFITNESS.	macy's	NORDSTROM	Target	ZARA
UNIQLO	VOLVO	PAPER+SOURCE	GOLD'S GYM	NORDSTROM rack

FIG AT 7TH

THE BLOC LA

PEACOCK THEATER

CRYPTO ARENA

DTLA

PERSHING SQUARE

ANGELUS ROSEDALE CEMETARY

LA CONVENTION CENTER

10



KIDDER.COM

This information supplied herein is from sources we deem reliable. It is provided without any representation, warranty, or guarantee, expressed or implied as to its accuracy. Prospective Buyer or Tenant should conduct an independent investigation and verification of all matters deemed to be material, including, but not limited to, statements of income and expenses. Consult your attorney, accountant, or other professional advisor.

km Kidder Mathews