



FOR
LEASE



**Kidder
Mathews**

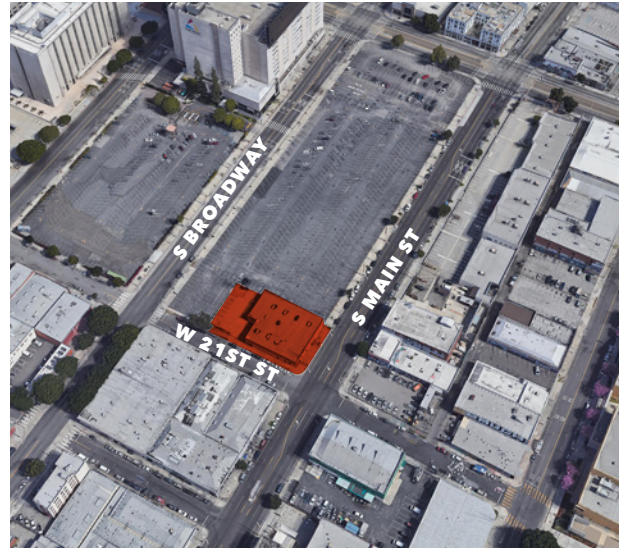
11,150 SF Warehouse with Parking

2005 S MAIN ST | LOS ANGELES, CA

FOR LEASE

2005 S Main St

LOS ANGELES, CA 90007



Highlights

11,150 SF available

\$1.65 PSF NNN

BUILT in 1978

APPROXIMATELY 1,500 SF of office space

17,894 SF of land available

LAM1 zone

16 SECURED, GATED parking spaces available (1.43/1,000 SF)

89 walk score

93 transit score (Rider's Paradise)

GL DOORS 2 (14' x 12')

POWER 240 v 3w / 200 Amps

JOHN ANTHONY, SIOR
213.225.7218
john.anthony@kidder.com
LIC N° 01226464

CHRISTOPHER STECK
213.225.7231
christopher.steck@kidder.com
LIC N° 01841338

CHRISTOPHER GIORDANO
213.225.7219
christopher.giordano@kidder.com
LIC N° 01928706

KIDDER.COM

This information supplied herein is from sources we deem reliable. It is provided without any representation, warranty, or guarantee, expressed or implied as to its accuracy. Prospective Buyer or Tenant should conduct an independent investigation and verification of all matters deemed to be material, including, but not limited to, statements of income and expenses. Consult your attorney, accountant, or other professional advisor.

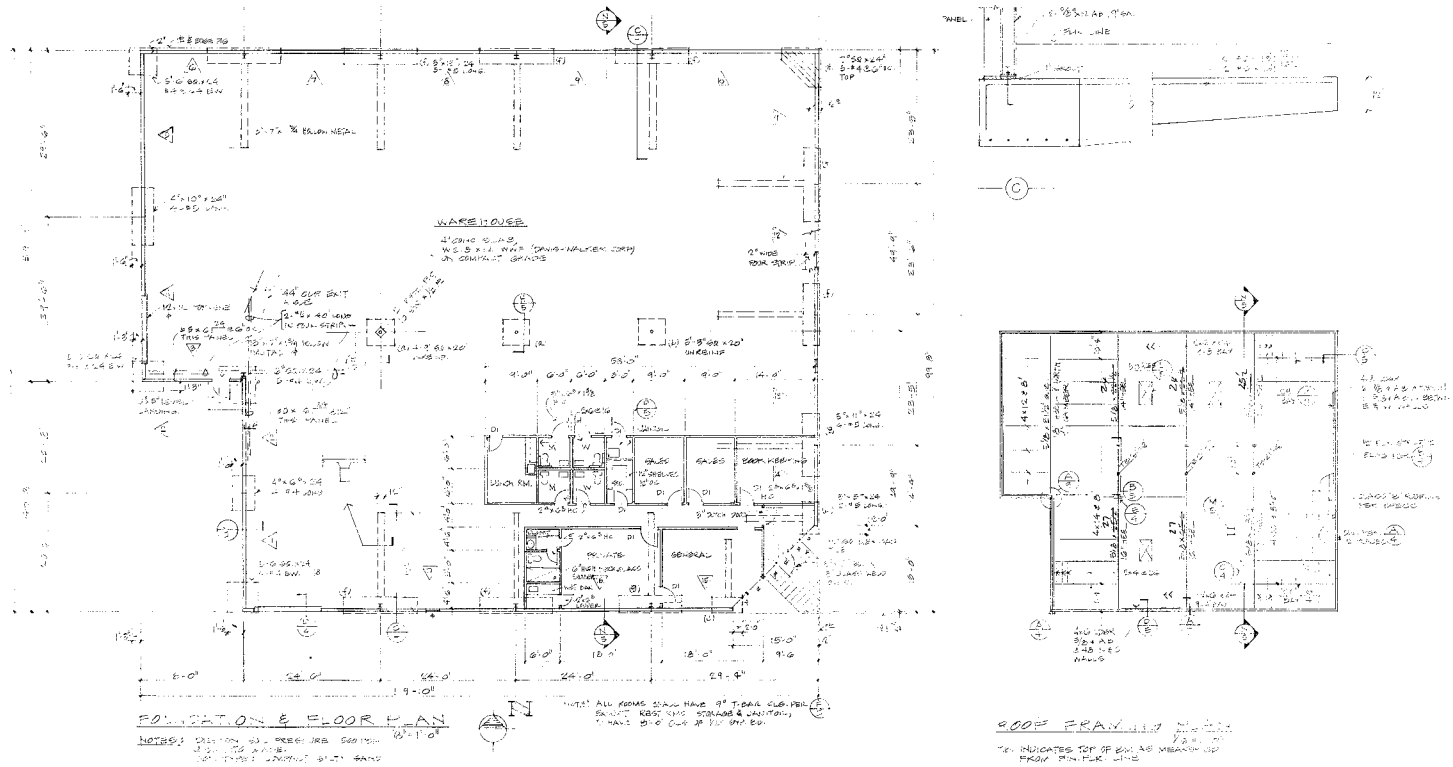
km Kidder Mathews

FOR LEASE

2005 S Main St

LOS ANGELES, CA 90007

Floor Plan



JOHN ANTHONY, SIOR
213.225.7218
john.anthony@kidder.com
LIC N° 01226464

CHRISTOPHER STECK
213.225.7231
christopher.steck@kidder.com
LIC N° 01841338

CHRISTOPHER GIORDANO
213.225.7219
christopher.giordano@kidder.com
LIC N° 01928706

KIDDER.COM

This information supplied herein is from sources we deem reliable. It is provided without any representation, warranty, or guarantee, expressed or implied as to its accuracy. Prospective Buyer or Tenant should conduct an independent investigation and verification of all matters deemed to be material, including, but not limited to, statements of income and expenses. Consult your attorney, accountant, or other professional advisor.

