



FOR SUBLEASE

175 De Haro Street

SAN FRANCISCO, CA



±2,800 RSF ground floor suite in
the heart of Showplace Square

JIM WALKER
415.229.8910
jim.walker@kidder.com
LIC N° 01750435

SCOTT VIX, CCIM, SIOR
415.309.4015
scott.vix@kidder.com
LIC N° 01407761

**Kidder
Mathews**

This information supplied herein is from sources we deem reliable. It is provided without any representation, warranty, or guarantee, expressed or implied as to its accuracy. Prospective Buyer or Tenant should conduct an independent investigation and verification of all matters deemed to be material, including, but not limited to, statements of income and expenses. Consult your attorney, accountant, or other professional advisor.

KIDDER.COM

FOR SUBLEASE

175 De Haro Street

SAN FRANCISCO, CA

±2,800

RENTABLE SQUARE FEET

1-5 YEAR

SUBLEASE TERM

IN THE HEART of Showplace Square

OPEN area

CONFERENCE room

STORAGE room

KITCHENETTE

EXPOSED ceilings

CONCRETE floors

STREET parking



JIM WALKER
415.229.8910
jim.walker@kidder.com
LIC N° 01750435

SCOTT VIX, CCIM, SIOR
415.309.4015
scott.vix@kidder.com
LIC N° 01407761

KIDDER.COM

km Kidder Mathews

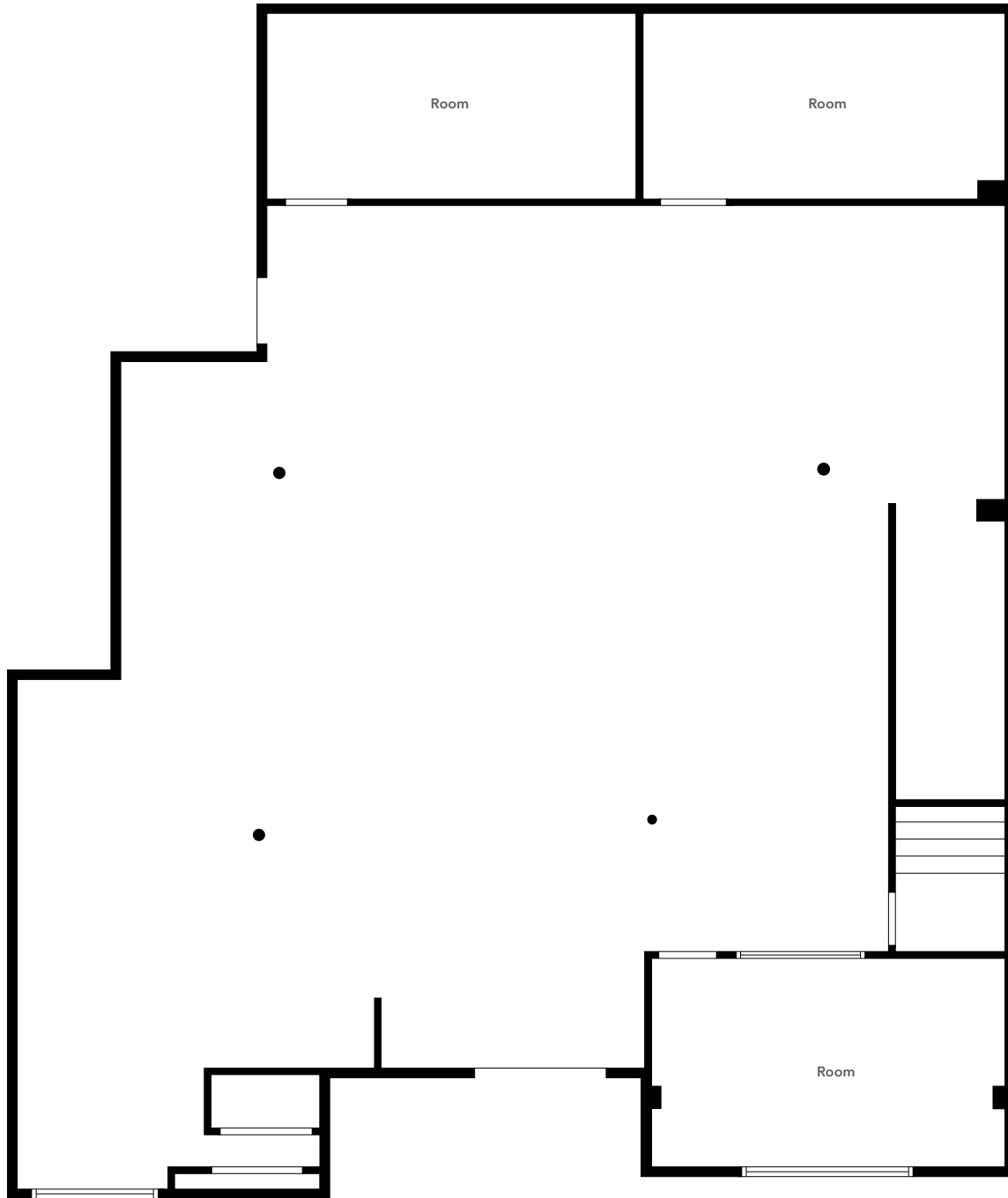
This information supplied herein is from sources we deem reliable. It is provided without any representation, warranty, or guarantee, expressed or implied as to its accuracy. Prospective Buyer or Tenant should conduct an independent investigation and verification of all matters deemed to be material, including, but not limited to, statements of income and expenses. Consult your attorney, accountant, or other professional advisor.

FOR SUBLEASE

175 De Haro Street

SAN FRANCISCO, CA

First Floor



KIDDER.COM

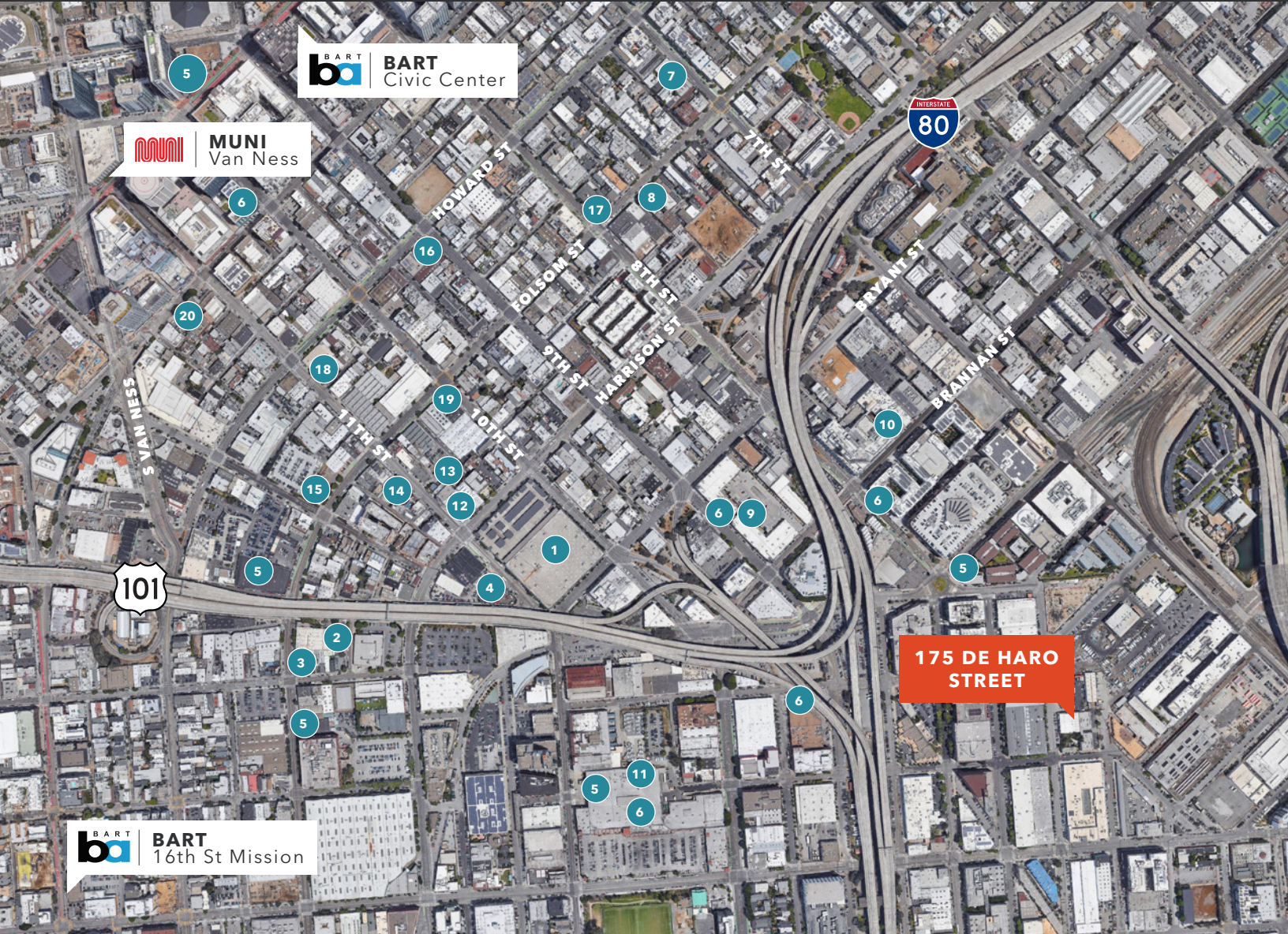
This information supplied herein is from sources we deem reliable. It is provided without any representation, warranty, or guarantee, expressed or implied as to its accuracy. Prospective Buyer or Tenant should conduct an independent investigation and verification of all matters deemed to be material, including, but not limited to, statements of income and expenses. Consult your attorney, accountant, or other professional advisor.



FOR SUBLEASE

175 De Haro Street

SAN FRANCISCO, CA



EAT + DRINK

- | | | | | | |
|---|-----------------------|----|-------------------|----|---------------------------|
| 1 | Costco | 7 | Sightglass Coffee | 14 | Bergerac |
| 2 | Rainbow Grocery | 8 | Basil Canteen | 15 | The Willows |
| 3 | Rintaro | 9 | Trader Joe's | 16 | Chantal Guilon Patisserie |
| 4 | SoMa Street Food Park | 10 | Bellota | 17 | Wicked Grounds |
| 5 | Starbucks | 11 | Safeway | 18 | Don Ramon's |
| 6 | Peet's Coffee | 12 | DNA Lounge | 19 | Sextant Coffee Roasters |
| | | 13 | Bar Agricole | 20 | Forgery |

KIDDER.COM

This information supplied herein is from sources we deem reliable. It is provided without any representation, warranty, or guarantee, expressed or implied as to its accuracy. Prospective Buyer or Tenant should conduct an independent investigation and verification of all matters deemed to be material, including, but not limited to, statements of income and expenses. Consult your attorney, accountant, or other professional advisor.

km Kidder Mathews