

1510-1516 E 1ST ST

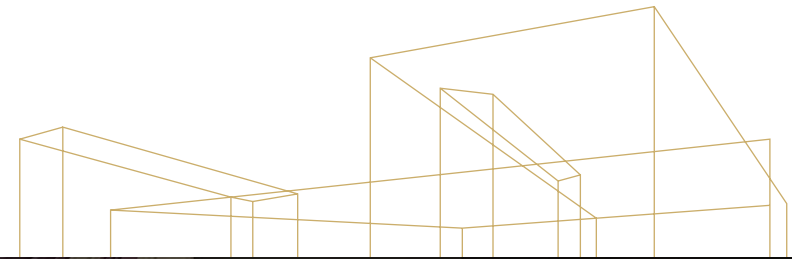
Two buildings totaling 5,800 SF of church space and daycare facility for Sublease.



1510-1516 E 1ST ST, LOS ANGELES, CA 90033

 Kidder
Mathews

1510-1516 E 1ST ST LOS ANGELES, CA 90033



5,800 SF

TOTAL SF

\$1.00/SF

OCT 2025

LEASE EXPIRATION

110 PEOPLE

SANCTUARY AREA CAPACITY

Property Highlights

TWO BUILDINGS totaling 5,800 SF of church space and a daycare facility

OCCUPANCY immediate

TERM through October 2025

FURNITURE included, plug & play

ABUNDANCE of parking available

EXPOSED ceilings

ABOVE STANDARD new improvements throughout

For more
information
contact

JOHN ANTHONY, SIOR
213.225.7218
john.anthony@kidder.com
LIC N° 01226464

CHRISTOPHER STECK
213.225.7231
christopher.steck@kidder.com
LIC N° 01841338

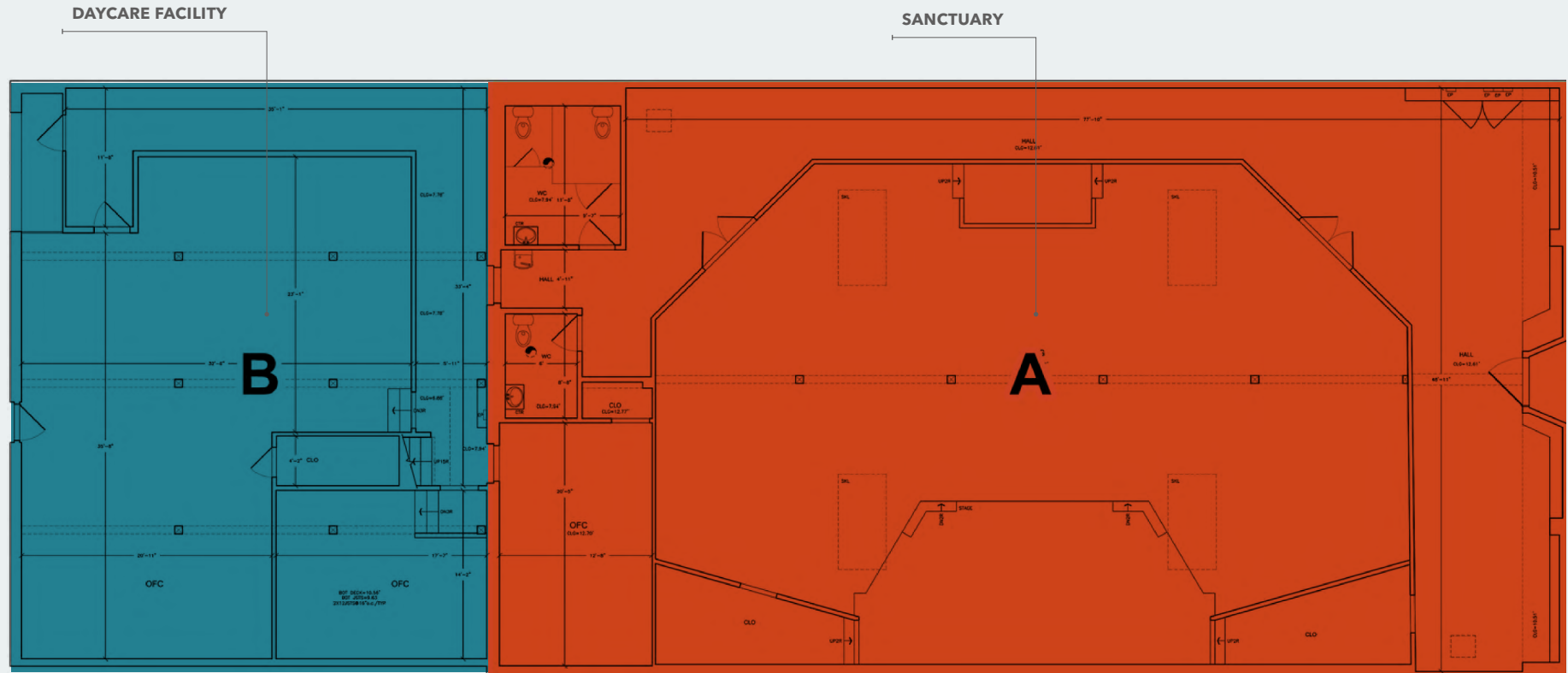
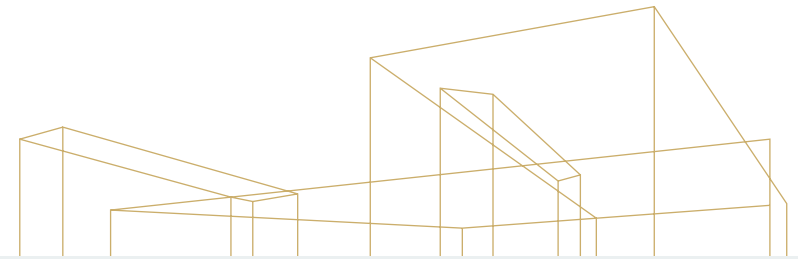
CHRISTOPHER GIORDANO
213.225.7219
christopher.giordano@kidder.com
LIC N° 01928706

TEAM-ASG.COM
KIDDER.COM

This information supplied herein is from sources we deem reliable. It is provided without any representation, warranty, or guarantee, expressed or implied as to its accuracy. Prospective Buyer or Tenant should conduct an independent investigation and verification of all matters deemed to be material, including, but not limited to, statements of income and expenses. Consult your attorney, accountant, or other professional advisor.



1510-1516 E 1ST ST LOS ANGELES, CA 90033



For more
information
contact

JOHN ANTHONY, SIOR
213.225.7218
john.anthony@kidder.com
LIC N° 01226464

CHRISTOPHER STECK
213.225.7231
christopher.steck@kidder.com
LIC N° 01841338

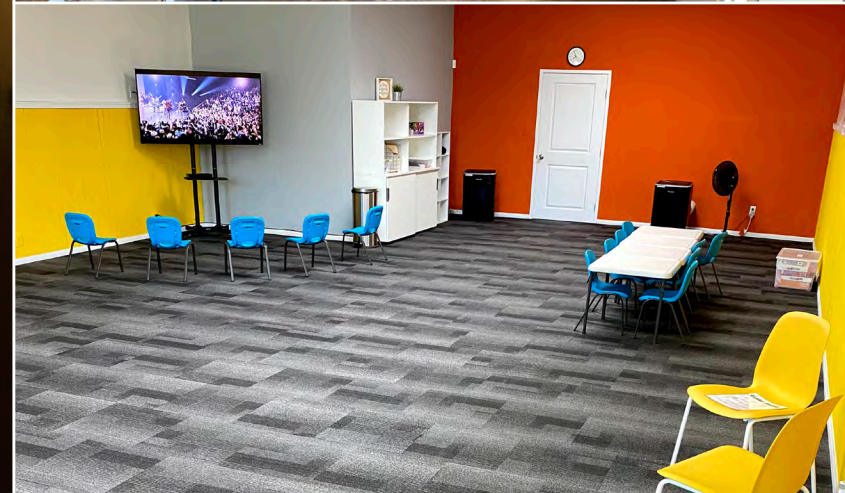
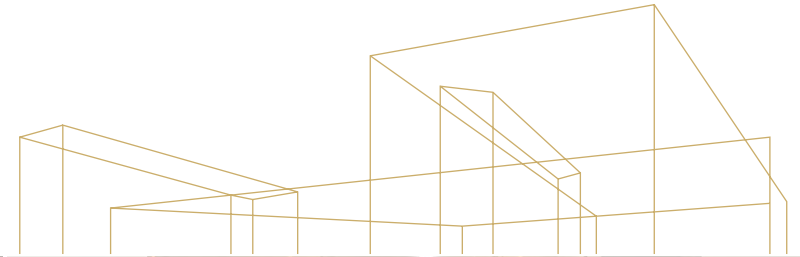
CHRISTOPHER GIORDANO
213.225.7219
christopher.giordano@kidder.com
LIC N° 01928706

TEAM-ASG.COM
KIDDER.COM

This information supplied herein is from sources we deem reliable. It is provided without any representation, warranty, or guarantee, expressed or implied as to its accuracy. Prospective Buyer or Tenant should conduct an independent investigation and verification of all matters deemed to be material, including, but not limited to, statements of income and expenses. Consult your attorney, accountant, or other professional advisor.



1510-1516 E 1ST ST LOS ANGELES, CA 90033



For more
information
contact

JOHN ANTHONY, SIOR
213.225.7218
john.anthony@kidder.com
LIC N° 01226464

CHRISTOPHER STECK
213.225.7231
christopher.steck@kidder.com
LIC N° 01841338

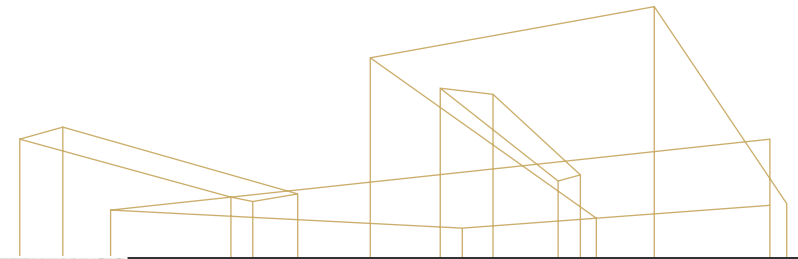
CHRISTOPHER GIORDANO
213.225.7219
christopher.giordano@kidder.com
LIC N° 01928706

TEAM-ASG.COM
KIDDER.COM

This information supplied herein is from sources we deem reliable. It is provided without any representation, warranty, or guarantee, expressed or implied as to its accuracy. Prospective Buyer or Tenant should conduct an independent investigation and verification of all matters deemed to be material, including, but not limited to, statements of income and expenses. Consult your attorney, accountant, or other professional advisor.



1510-1516 E 1ST ST LOS ANGELES, CA 90033



Property Features



BUILDING BUILT IN 1922



**LOCATED WITHIN ONE BLOCK OF
PICO/ALISO METRO STATION**



**5 MINUTE WALK TO
LOS OLIVOS MARKETPLACE**



IMMEDIATE ACCESS TO ALL FREEWAYS

**For more
information
contact**

JOHN ANTHONY, SIOR
213.225.7218
john.anthony@kidder.com
LIC N° 01226464

CHRISTOPHER STECK
213.225.7231
christopher.steck@kidder.com
LIC N° 01841338

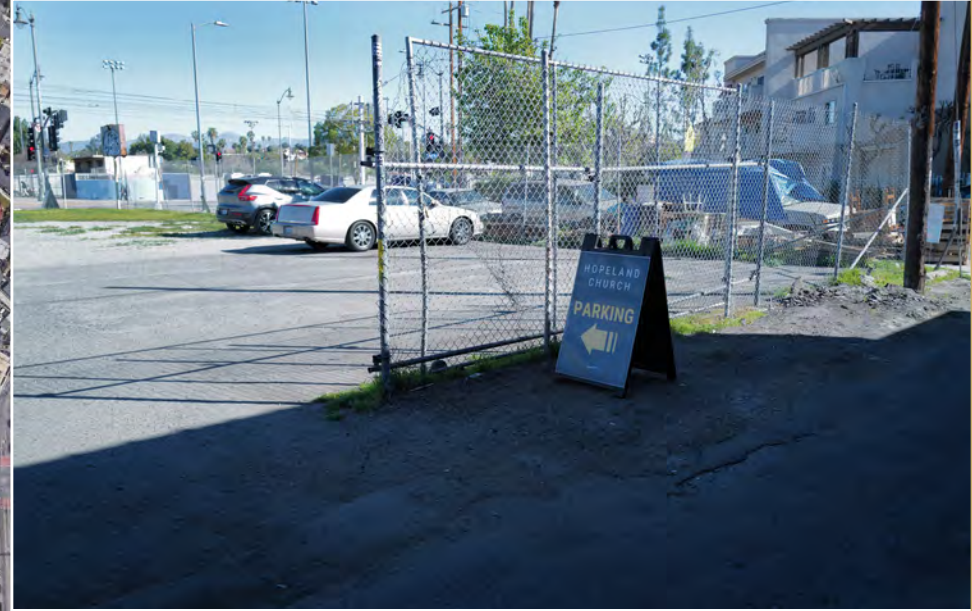
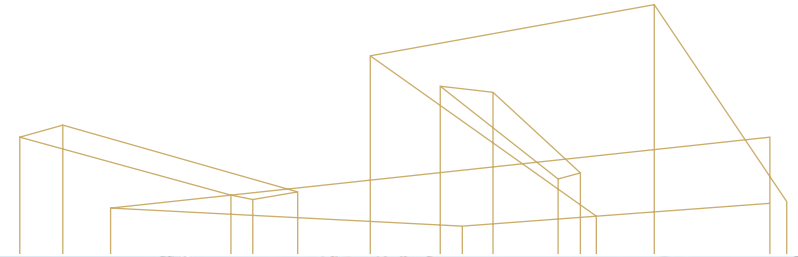
CHRISTOPHER GIORDANO
213.225.7219
christopher.giordano@kidder.com
LIC N° 01928706

**TEAM-ASG.COM
KIDDER.COM**



This information supplied herein is from sources we deem reliable. It is provided without any representation, warranty, or guarantee, expressed or implied as to its accuracy. Prospective Buyer or Tenant should conduct an independent investigation and verification of all matters deemed to be material, including, but not limited to, statements of income and expenses. Consult your attorney, accountant, or other professional advisor.

1510-1516 E 1ST ST LOS ANGELES, CA 90033



For more
information
contact

JOHN ANTHONY, SIOB
213.225.7218
john.anthony@kidder.com
LIC N° 01226464

CHRISTOPHER STECK
213.225.7231
christopher.steck@kidder.com
LIC N° 01841338

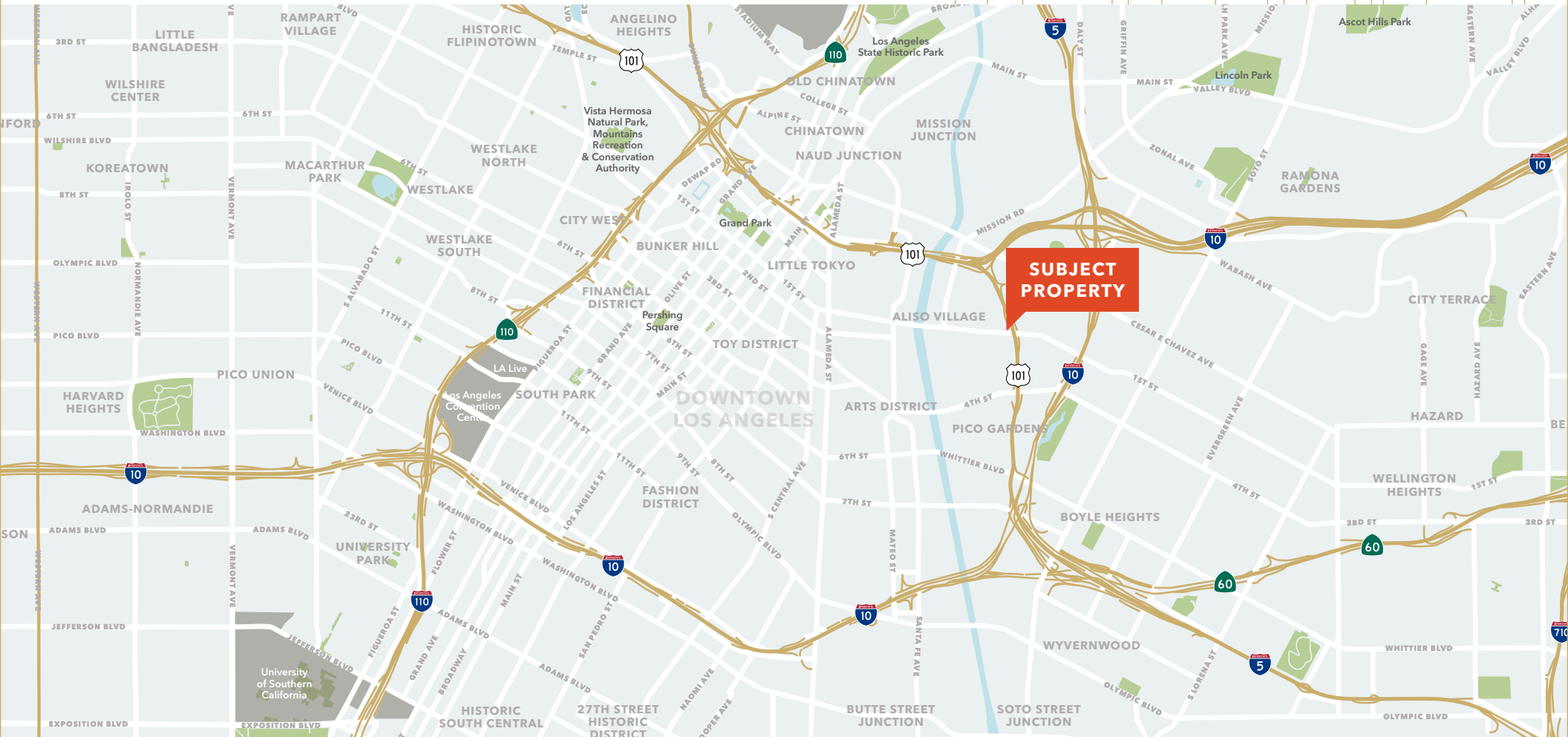
CHRISTOPHER GIORDANO
213.225.7219
christopher.giordano@kidder.com
LIC N° 01928706

TEAM-ASG.COM
KIDDER.COM

This information supplied herein is from sources we deem reliable. It is provided without any representation, warranty, or guarantee, expressed or implied as to its accuracy. Prospective Buyer or Tenant should conduct an independent investigation and verification of all matters deemed to be material, including, but not limited to, statements of income and expenses. Consult your attorney, accountant, or other professional advisor.



1510-1516 E 1ST ST LOS ANGELES, CA 90033



For more
information
contact

JOHN ANTHONY, SIOR
213.225.7218
john.anthony@kidder.com
LIC N° 01226464

CHRISTOPHER STECK
213.225.7231
christopher.steck@kidder.com
LIC N° 01841338

CHRISTOPHER GIORDANO
213.225.7219
christopher.giordano@kidder.com
LIC N° 01928706

TEAM-ASG.COM
KIDDER.COM



This information supplied herein is from sources we deem reliable. It is provided without any representation, warranty, or guarantee, expressed or implied as to its accuracy. Prospective Buyer or Tenant should conduct an independent investigation and verification of all matters deemed to be material, including, but not limited to, statements of income and expenses. Consult your attorney, accountant, or other professional advisor.