



50 YEARS. THE EDGE IN YOUR MARKET.

# MULTIFAMILY INVESTMENTS

# WE ARE THE EDGE IN YOUR MARKET.

The Kidder Mathews multifamily investments group has the deep commercial real estate and local market expertise to provide superior apartment analysis, advice, and advocacy for the multifamily industry.

Over the past three years, our team has assisted its clients with the sale of 11,000 units valued at more than \$1.1 billion and have performed nearly 1,000 appraisals. We keep a close eye on West Coast markets and also track regional as well as national housing trends. Whether you are a local, regional, or institutional investor, our experts have the resources, relationships, and experience to guide you through a successful transaction.

## AWARD WINNING SERVICES

6x	14x	13x	8x	21x	4x
INC. 5000 FASTEST GROWING PRIVATE COMPANIES	PSBJ WASHINGTON'S BEST WORKPLACES	OREGON BUSINESS 100 BEST COMPANIES	BAY AREA NEWS GROUP TOP WORKPLACES	PSBJ LARGEST CRE FIRMS	SAN DIEGO BUSINESS JOURNAL LARGEST CRE FIRMS

**\$1.1B**

3-YEAR TRANSACTION VOLUME

**11,000**

UNITS SOLD IN THE PAST 3 YEARS

**1,000**

APPRAISALS PERFORMED

## MULTIFAMILY INVESTMENT SERVICES

Seller representation

Buyer representation

1031 tax-deferred exchanges

Portfolio analysis and strategic planning

Financial analysis

Supply and demand analysis

Demographic studies and reports

Market research surveys, trends and analysis

Valuation and appraisal services

# SUCCESS STORIES

## BRITTNEY LANE APARTMENTS

Lacey, WA | \$35,070,000 | 189 units



## REVERB APARTMENTS

Seattle, WA | \$31,000,000 | 85 units



## DOVER HEIGHTS

Newport Beach, CA | \$30,554,000 | 66 units



## SABLEWOOD GARDENS APTS

Bakersfield, CA | \$25,850,000 | 152 units



## TERRA FREMONT

Fremont, CA | \$25,750,000 | 78 units



## VUE AT LAKE MURRAY

San Diego, CA | \$18,000,000 | 65 units



## 25TH ON FIFTH

San Diego, CA | \$14,500,000 | 25 units



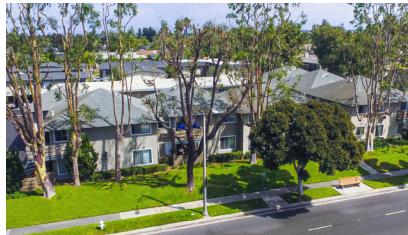
## COLLECTIVE PORTLAND

Portland, OR | \$10,650,000 | 52 units



## DOVER SHORES

Newport Beach, CA | \$8,000,000 | 18 units



## THE ROUX

Portland, OR | \$6,350,000 | 21 units



## ARCADIA APARTMENTS

Sacramento, CA | \$6,350,000 | 56 units



## PHOENICIAN VILLA

Phoenix, AZ | \$5,500,000 | 93 units



# RECENT MULTIFAMILY TRANSACTIONS

ALAIRE APARTMENT HOMES	Renton, WA \$97.5M   357 units
RIVERSTONE APARTMENTS	Federal Way, WA \$70.0M   308 units
WATERSTOBE AT SILVERLAKE	Everett, WA \$47.05M   204 units
PARK 120	Everett, WA \$40.25M   249 units
THE DRAKE	Tacoma, WA \$30.0M   398 units
4021 8TH AVENUE	San Diego, CA \$16.5M   36 units
CORBETT HEIGHTS APARTMENTS	Portland, OR \$15.0M   48 units
RIMROCK APARTMENTS	La Mesa, CA \$14.1M   62 units
STONECREEK APARTMENTS	Kent, WA \$10M   70 units
EASTWOOD MEADOWS	Escondido, CA \$9.4M   129 units
BEL AIRE APARTMENTS	Beaverton, OR \$9.275M   67 units
STRATFORD ARMS	El Cajon, CA \$7.75M   35 units
THE ARTHUR	Portland, OR \$7.6M   50 units
CASA LOMA	Fallbrook, CA \$6.9M   48 units
CASA DEL MARW	Costa Mesa, CA \$6.4M   16 units



## KIDDER MATHEWS REGIONAL LEADERSHIP

### NORTHWEST

#### BRIAN HATCHER

President & COO  
Brokerage  
206.296.9634  
brian.hatcher@kidder.com

### NORTHERN CALIFORNIA & NEVADA

#### ERIC LUHRS

Regional President,  
Brokerage  
408.588.2333  
eric.luhrs@kidder.com

### SOUTHERN CALIFORNIA & SOUTHWEST

#### MARK READ

Regional President,  
Brokerage  
858.369.3010  
mark.read@kidder.com

## ABOUT KIDDER MATHEWS

Kidder Mathews is the largest independent commercial real estate firm on the West Coast, with 900 real estate professionals and staff in 21 offices in Washington, Oregon, California, Nevada, and Arizona. We offer a complete range of brokerage, appraisal, property management, consulting, project and construction management, and debt & equity finance services for all property types. The company completed \$8 billion in transactions, manages over 70 million square feet of space, and conducts over 1,800 appraisal assignments annually.

## OUR LOCATIONS

### PACIFIC NORTHWEST

Seattle Tacoma  
Bellevue Olympia  
South Seattle Portland

### N. CALIFORNIA/NEVADA

San Francisco  
Pleasanton Silicon Valley Roseville  
Redwood Shores Sacramento Reno

### S. CALIFORNIA/ARIZONA

Los Angeles El Segundo  
West LA Orange County San Diego  
Pasadena/Tri-Cities Carlsbad Phoenix

