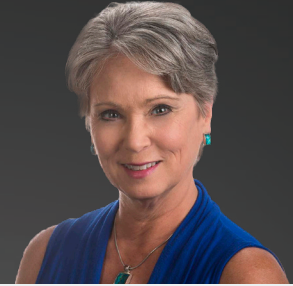


# SANDY RODRIGUEZ

Associate Vice President

T 408.970.9400  
C 650.576.5047  
sandy.rodriguez@kidder.com  
LIC N° 01249030



*Sandy Rodriguez is an associate vice president with Kidder Mathews and has over 25 years of commercial real estate experience in addition to a background in property management.*

This experience gives Sandy a unique perspective of both tenant and landlord requirements. Previous experience includes CBRE, Spieker Properties, Insignia Commercial Group and MetLife.

Sandy provides both landlord and tenant representation services and has been involved in transactions exceeding \$1.8 billion in value. Her strengths are in problem-solving, creativity, organization, and communication. She uses those skills in the oversight of the design, implementation and management of marketing campaigns for listed properties, as well as strategic property re-branding and re-positioning, lease negotiations, and assisting with underwriting assumptions. Sandy takes pride in developing strong relationships with her clients.

Prior to entering the real estate industry, Sandy enjoyed a career spanning nearly 20 years as a professional ballerina. She applies the drive and discipline of that career to all that she does.

## AFFILIATIONS & MEMBERSHIPS

2023 - Current: Arts Unity Movement, Board of Directors

2020-Current: President's Advisory Council, College of San Mateo

2009-2019: NewGround Theatre Dance Company, Performer

2004-2008: CREW Network, Various Committee Service

2002-2007: CREW-SF, Board of Directors

2002-2008 Peninsula Ballet Theatre, Board of Directors

## SELECT CLIENT LIST

Apex Physical Therapy

Casiopea

Clarion Realty Group

eCapital

Equity Office Properties

Franklin Properties

GIC Real Estate

Kensington Technology

Legacy Partners

Liknon

One Step Beyond

RREEF

Securitas

Sares-Regis

Softbank Energy

Truebeck Construction

Walton Street Capital

WestBridge Capital