

KEVIN JOSHI

Executive Vice President, Shareholder

T 503.221.2282
C 503.705.3499
kevin.joshi@kidder.com



Kevin Joshi specializes in sales and leasing of commercial office properties in the Portland metro area.

Kevin has been a commercial real estate broker for over twenty years in the Portland metropolitan area, bringing to his clients extensive experience in the area of sales and leasing of commercial office properties. In addition to representing buyers, sellers, and tenants, Kevin also represents investors, landlords and developers in some of the city's most recognizable downtown office developments (from site acquisition through final lease-up). Whether large or small, Kevin's clients are the beneficiary of his extensive market knowledge and tireless work ethic.

EXPERIENCE

2005 - Present, Licensed Principal Broker & Shareholder, Kidder Mathews

2001 - 2005, Licensed Broker, Cushman & Wakefield

EDUCATION & LICENSES

University of Oregon, BS in advertising, 1987

Principal Broker License, Oregon & Washington

PAST/PRESENT AFFILIATIONS

Commercial Association of Brokers - Board Member

Oregon Club of Portland - Board Member

Doernbecher Children's Hospital Auction - Board Member

UKANDU - Board Member

Phi Kappa Psi fraternity - Member

Multnomah Athletic Club - Member

RECOGNITIONS

Broker of the Year, Nominee - Commercial Association of Realtors

Big Hitter Award winner - Kidder Mathews

CLIENTS REPRESENTED

Aflac

Banneker Partners

Berkshire Hathaway

Bill Naito Company

Bowen Development Co.

City of Portland

CLEARresult

Colonial Life

Corcoran

Disney Corporation

Durham & Bates

E-Trade

Farmers Insurance

HAVAS Edge

Howard S. Wright

KinderCare

Ligman Lighting

Marquam Group

NBC

New York Life

Sojitz Corp

Starbucks

Stewart Title

NOTABLE TRANSACTIONS

Total Size	Details
102,848 SF	Lease to CLEAResult at 1st & Main, represented tenant
83,995 SF	Lease to Amazon at Broadway Tower, represented landlord
62,454 SF	Sale of Salem Bottling Site, represented seller
56,422 SF	Lease to XO at Nimbus Oaks, represented landlord
53,750 SF	Purchase PM Industries HQ site, represented buyer
53,665 SF	Build-to-suit for General Pacific at Townsend Way, represented buyer
45,073 SF	Lease to Wacom at Pearl West, represented landlord
40,000 SF	Acquisition of Land Site For Ritz Carlton tower site, represented lessor/buyer
40,000 SF	Purchase & sale of the Opus Creative Building, represented buyer & seller
39,507 SF	Sublease to Interface Engineering at 1st & Main, represented sublandlord
30,193 SF	Lease to ZoomCare at Pearl West, represented landlord
30,000 SF	Purchase of land site for Broadway Tower, represented buyer
27,906 SF	Lease to Markowitz Herbold at Broadway Tower, represented landlord
23,331 SF	Lease to ESCO at Montgomery Park, represented landlord
23,218 SF	Purchase of Grocery Outlet, Salem, represented investment buyer
22,116 SF	Purchase by Ligman Lighting HQ site, represented buyer
22,902 SF	Lease to Opus Solutions at Nimbus Oaks, represented landlord
21,400 SF	Lease to AKA Direct at 2415 N. Ross Ave, represented landlord
20,500 SF	Lease to NBC (Grimm Production) at American Can, represented landlord
20,144 SF	Lease to Vesta at Park 217 Corporate, represented landlord
20,074 SF	Lease to Anesthesiologists Assoc. at Greystone, represented landlord
20,000 SF	Purchase of land site for Pearl West, represented buyer
20,000 SF	Lease to KinderCare at 3325 SW Moody, represented tenant
18,997 SF	Lease to REGUS at Pearl West, represented landlord
17,106 SF	Lease to Cable Huston at Broadway Tower, represented landlord
17,565 SF	Lease to Howard S. Wright at Pearl West, represented landlord
17,527 SF	Lease to DaBella Exteriors lease at Scholls Bus. Cntr., represented tenant
17,471 SF	Lease to BCD World Travel at Montgomery Park, represented landlord
17,376 SF	Sale of land site to Columbia Sportswear, represented seller
15,887 SF	Purchase of Oregon Auto Deals Association headquarter site, represented buyer
13,498 SF	Lease to RGA at 410 NW Glisan, represented landlord
13,097 SF	Lease to Schnitzer Steel at Montgomery Park, represented landlord

TENANT REPRESENTATION EXPERIENCE



CLEAResult

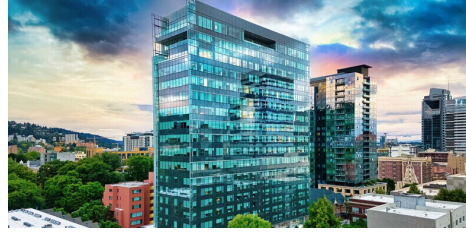


LANDLORD REPRESENTATION EXPERIENCE



Block 216/Ritz-Carlton Tower
812 SW Washington St

SQUARE FEET 1,063,993 SF



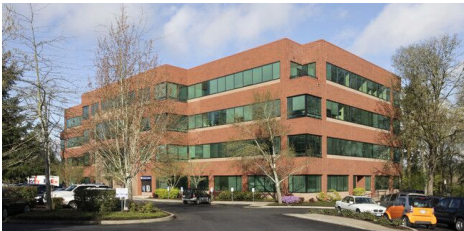
Broadway Tower
1455 SW Broadway

SQUARE FEET 430,000 SF



CH2M
2020 SW 4th Ave

SQUARE FEET 225,261 SF



Creekside Corporate Park
8905 SW Nimbus Ave

SQUARE FEET 540,997 SF



Fox Tower
805 SW Broadway

SQUARE FEET 438,466 SF



Harrison Square
1800 SW 1st Ave

SQUARE FEET 182,000 SF



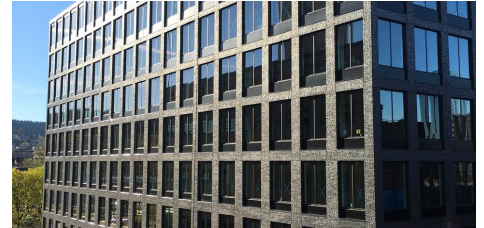
Nimbus Oaks
900 SW Nimbus Ave

SQUARE FEET 171,828 SF



Park 217 Business Center
11950 SW Garden Pl

SQUARE FEET 256,530 SF



Pearl West
707 NW 14th Ave

SQUARE FEET 155,465 SF



Cornell Oaks
15220 NW Greenbrier Pkwy

SQUARE FEET 691,559 SF



Montgomery Park
2701 NW Vaughn St

SQUARE FEET 656,989 SF



Woodside Corporate Park
15725 SW Greystone Ct

SQUARE FEET 734,755 SF